

JOYCE EMERGENCY PLAN PRESENTATION



MAY 26TH

6:30 PM

CRESCENT GRANGE

**Jim Buck (928-2177): Explain Joyce Micro-
Island Contingency Plan
Panel of Clallam County Emergency
Management Leaders**

CASCADIA SUBDUCTION ZONE

Plate Tectonic Setting

Subduction zone: Juan de Fuca and Gorda plate subducting beneath North American plate

Rate: ~3 cm/year

Dip of interface: ~12°

PACIFIC PLATE

JUAN DE FUCA PLATE

NORTH AMERICAN PLATE

GORDA PLATE

Most Recent Great Earthquake

Date: January 26, 1700

Magnitude: ~9.0

Rupture length: ~1000 km

Rupture width: ~80 km

Recurrence interval: 500 years

1000 km

PACIFIC PLATE

Tsunami Characteristics

(rough estimate from Native American oral history and written records in Japan)

Peak tsunami height in the near-source area: ~60 ft at mouth of Redwood Creek, Northern California (from Yurok stories)

Peak tsunami height in Japan (9 hours travel time and 3900 miles away): ~15 ft

THE 9.2 QUAKE

Location: 130 miles off coast

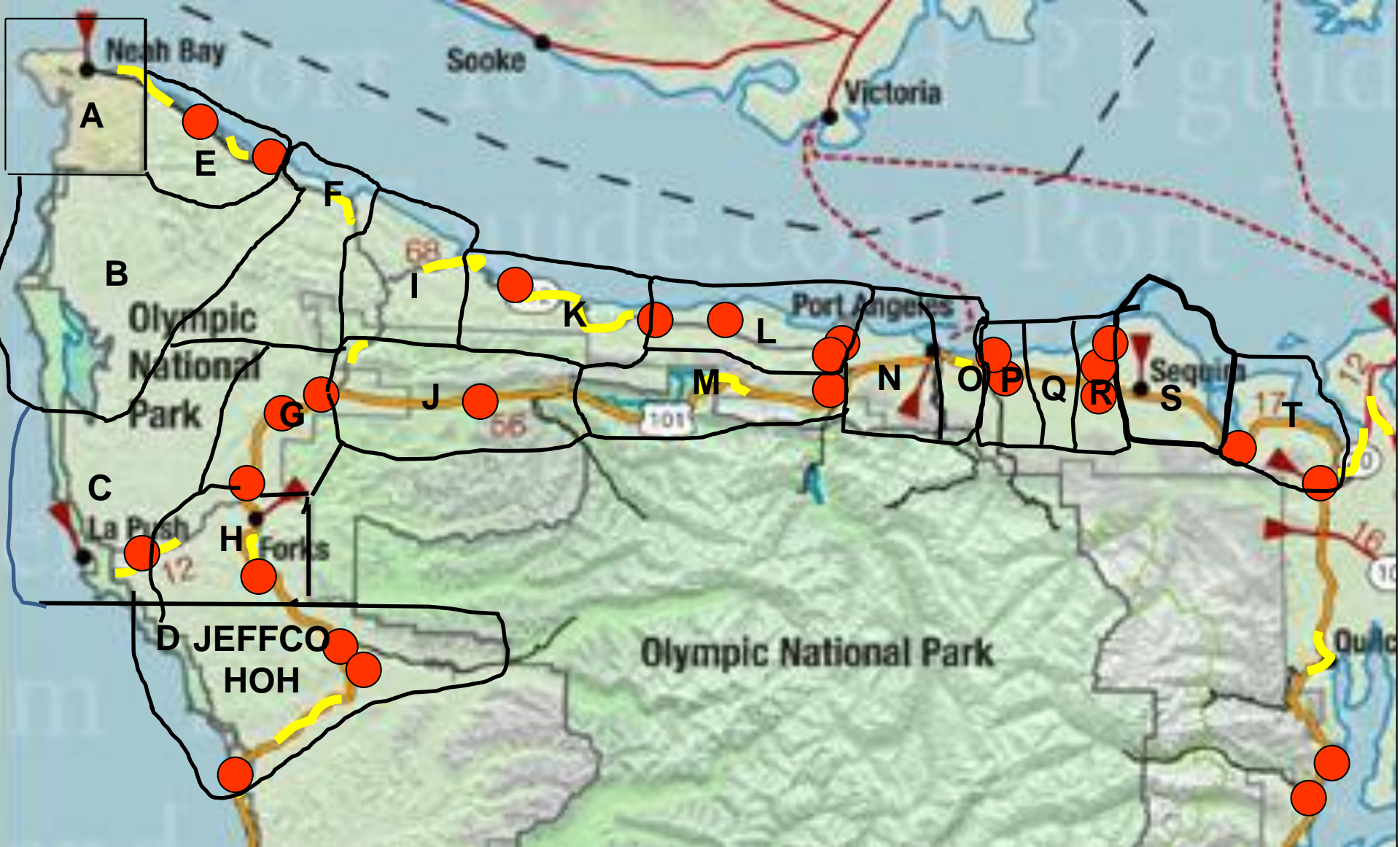
Length of Rupture: 600 miles

Width of Rupture: 50 miles

Duration: 6.5 minutes

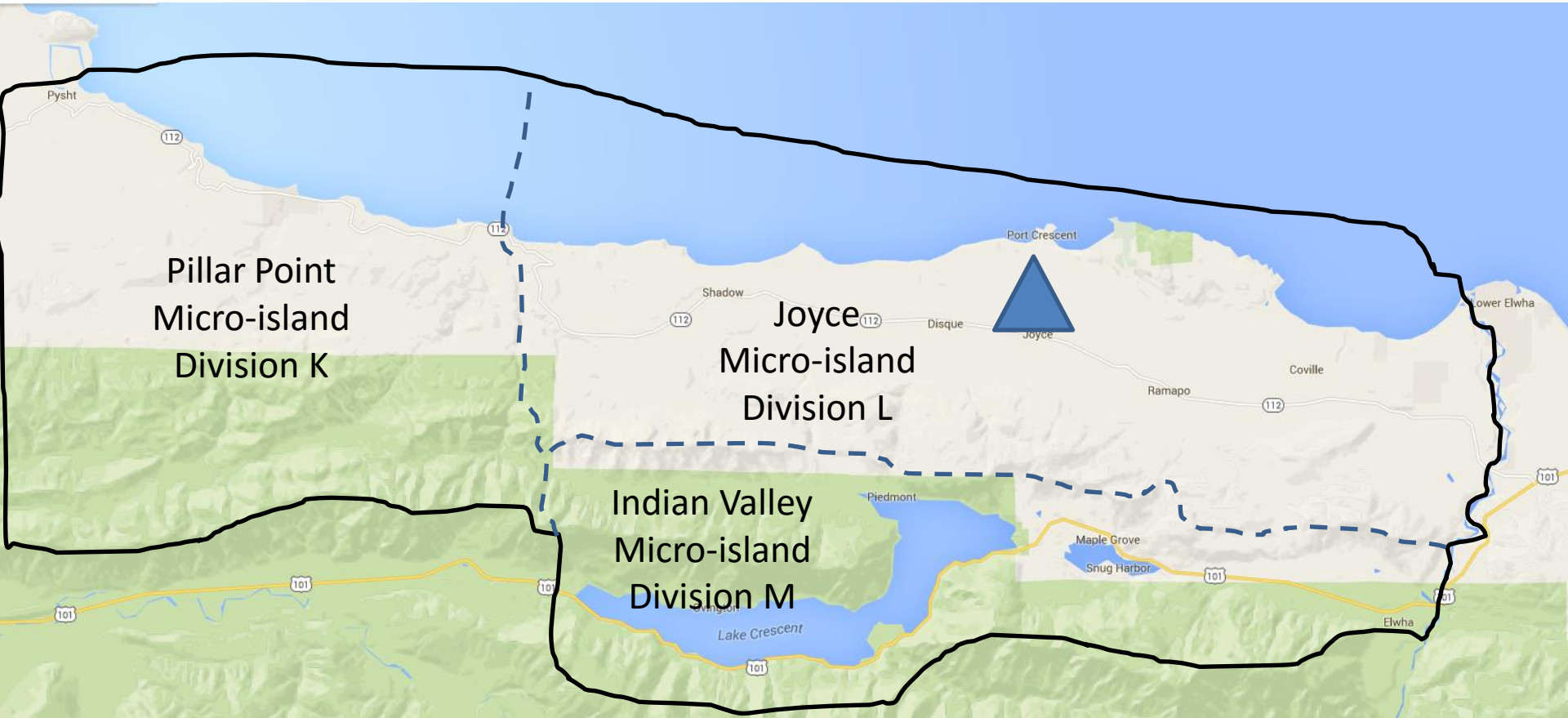
Magnitude at rupture: 9.2

Ground shaking in Joyce – You won't be able to stand or walk for 6.5 minutes.

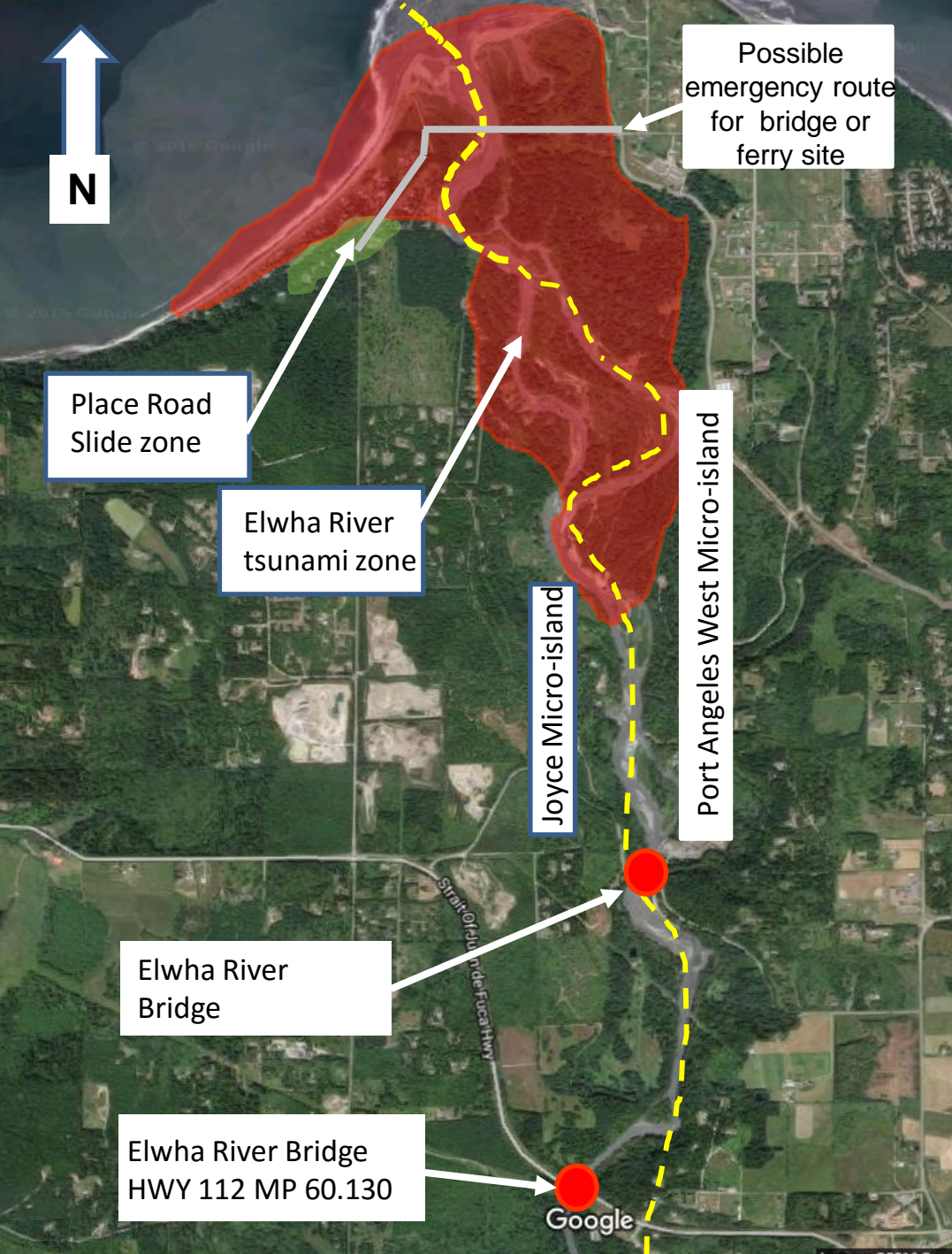


Damaged roads and bridges divide the county into at least 20 micro-islands.

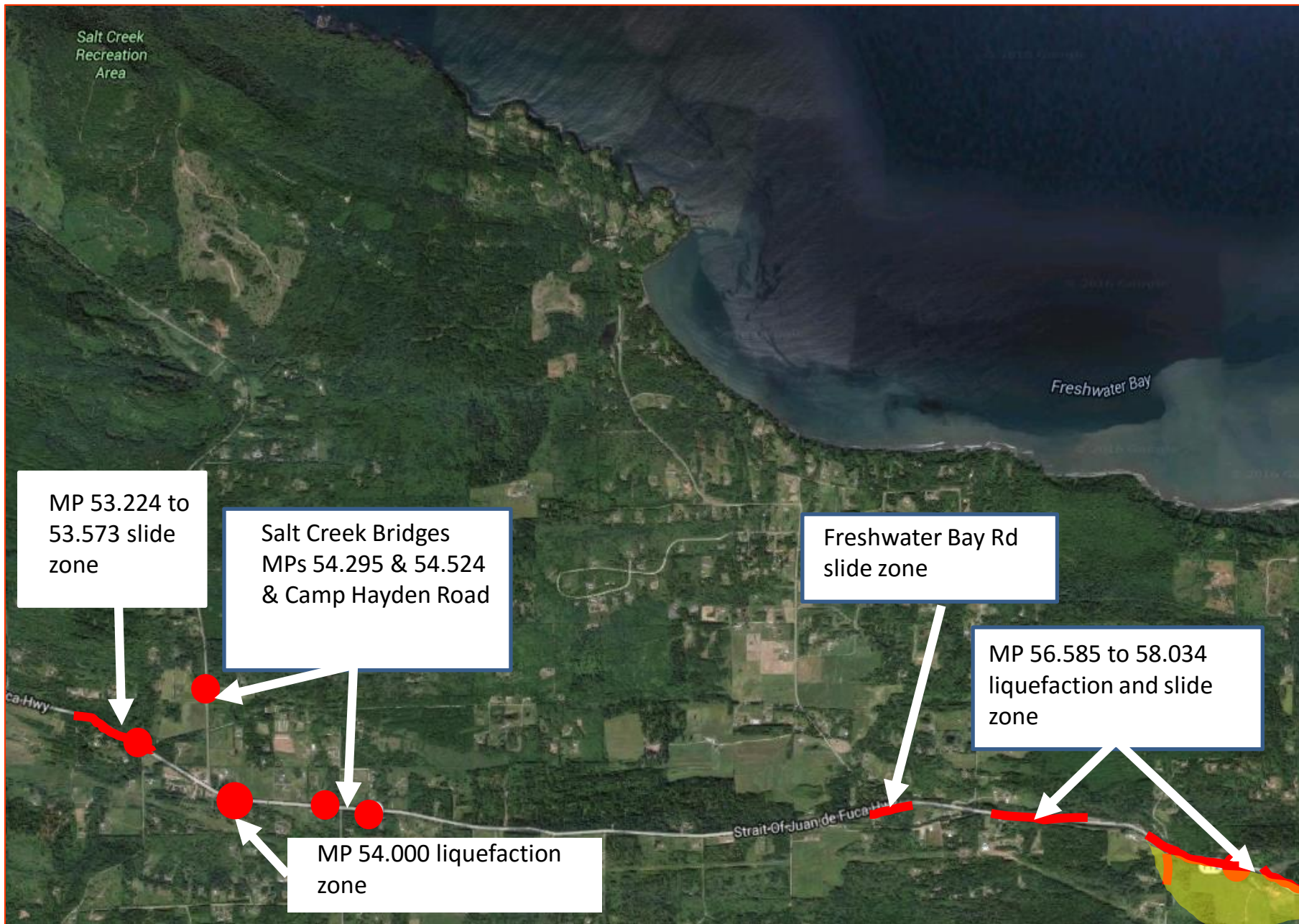
Area Command 3 - Joyce



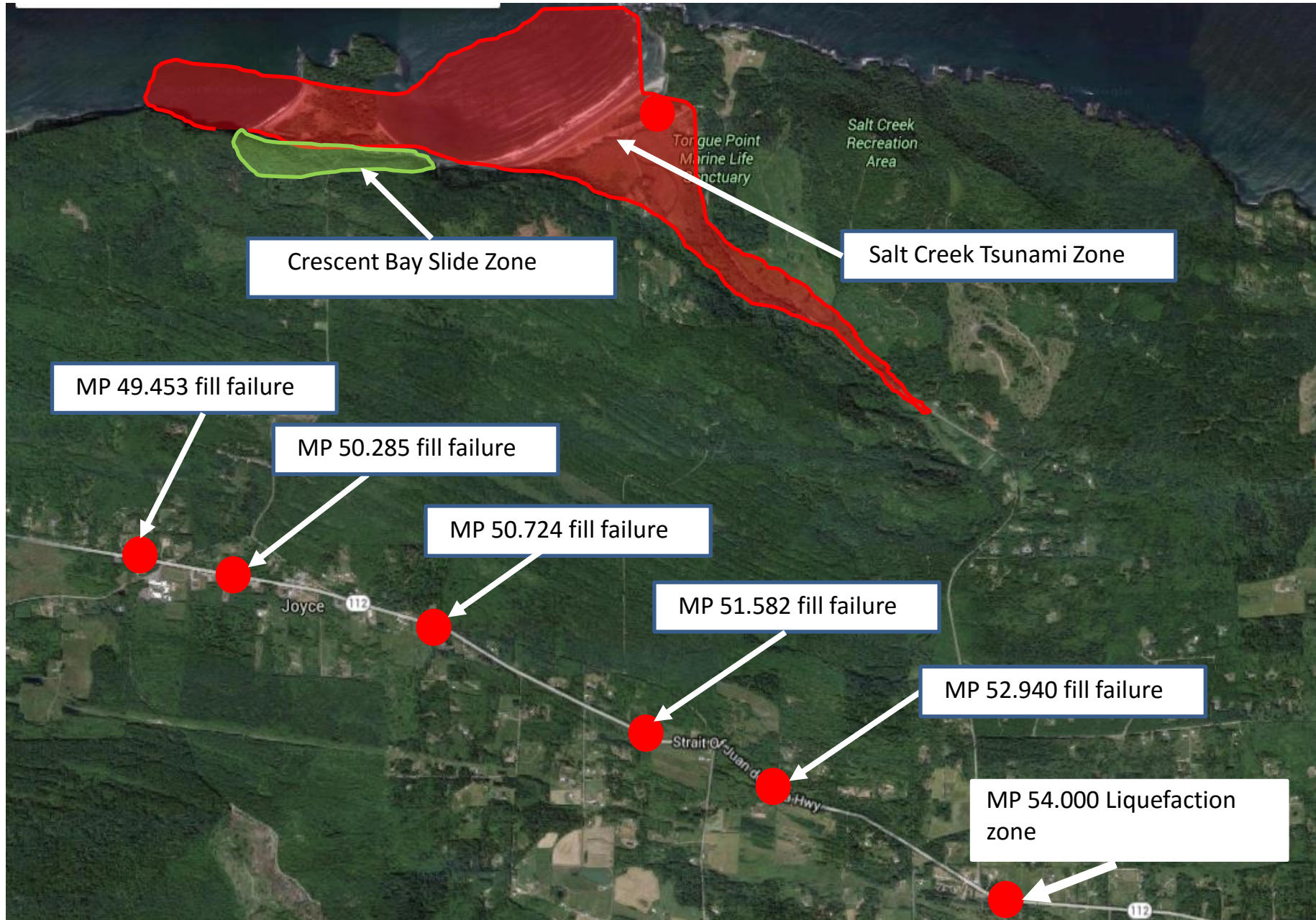
Joyce Micro-island, HWY 112 from MP 58.424 to MP 60.130



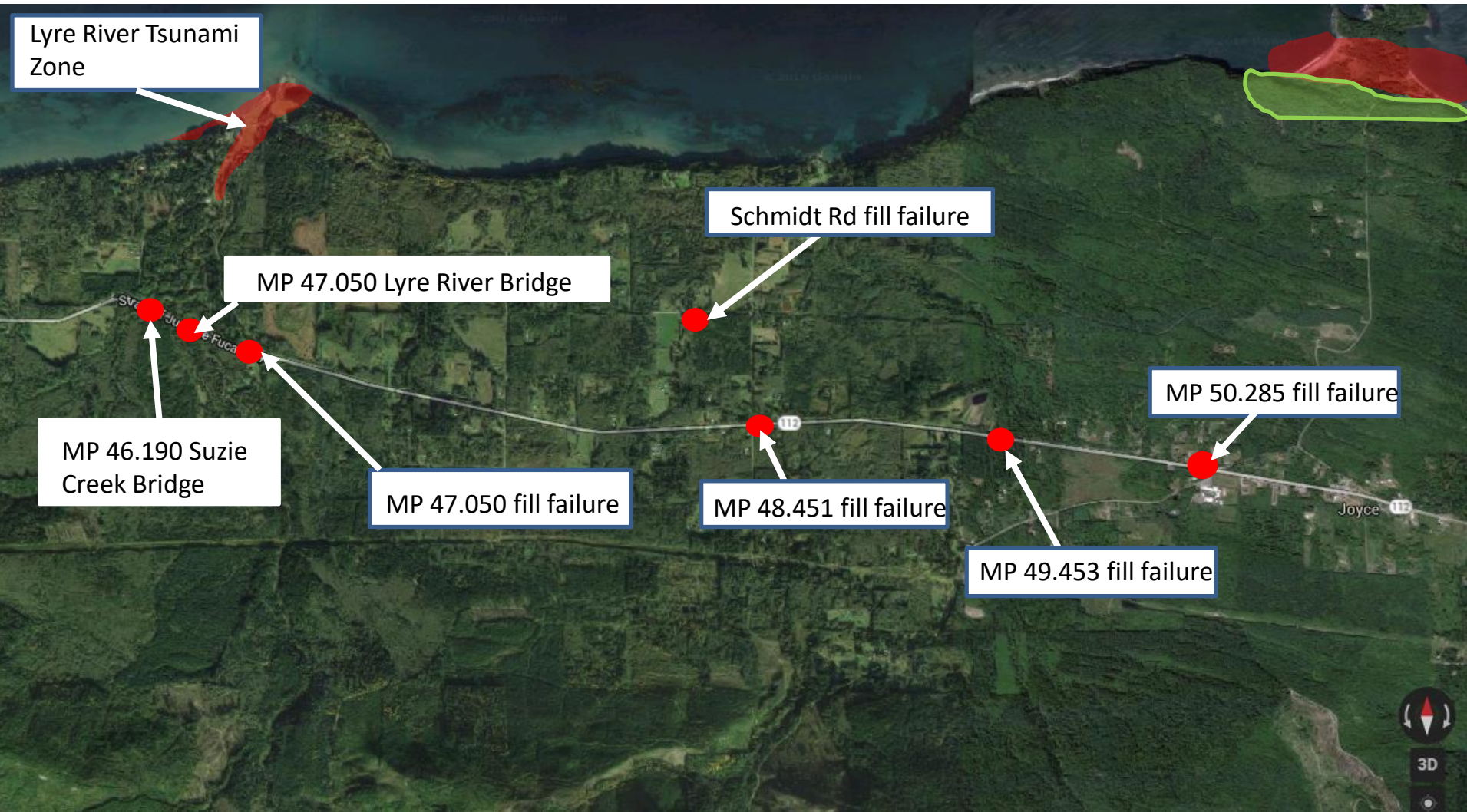
Joyce Micro-island, HWY 112 from MP 53.224 to MP 58.424



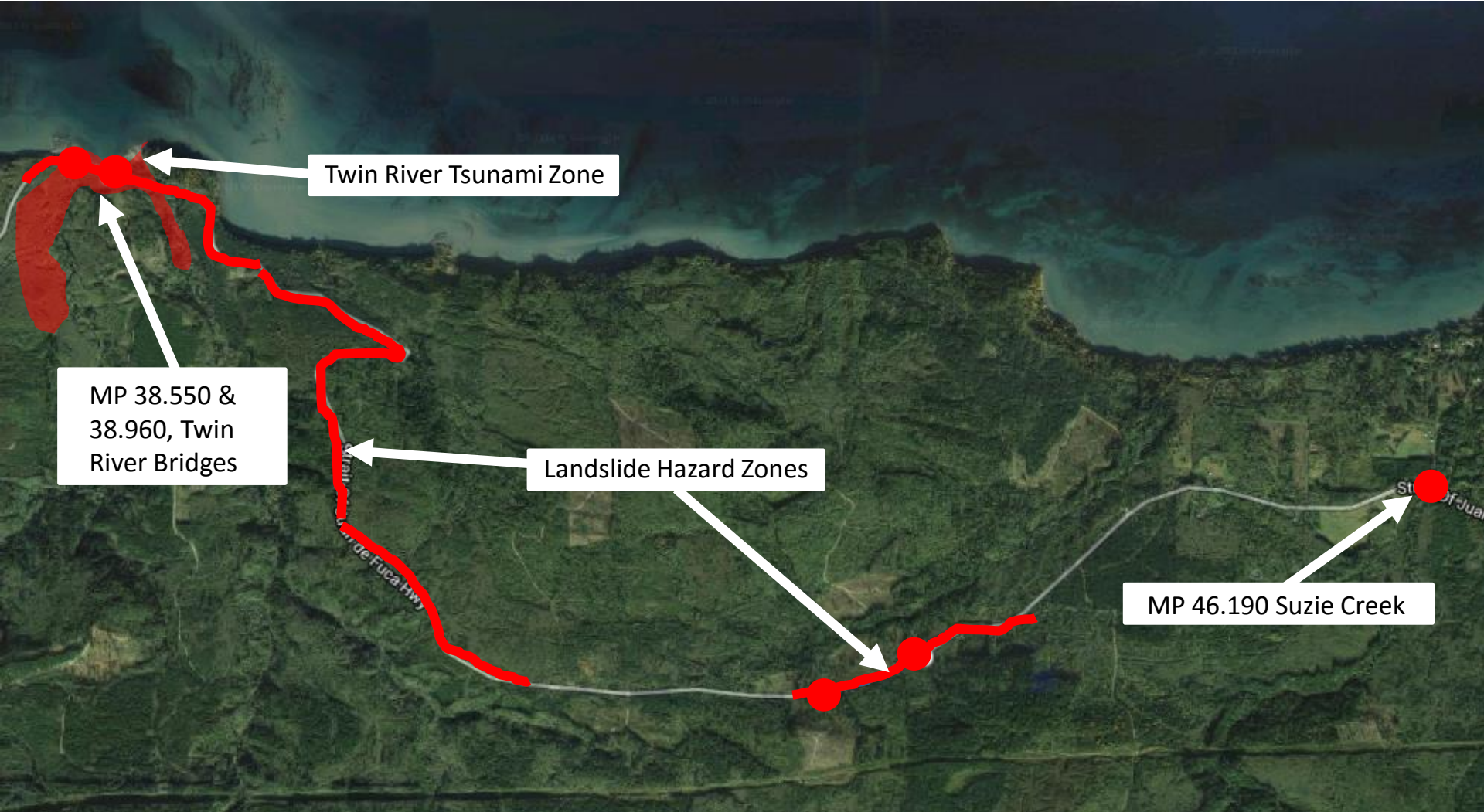
Joyce Micro-island, HWY 112 from MP 49.453 to MP 54.000 & Camp Hayden Road



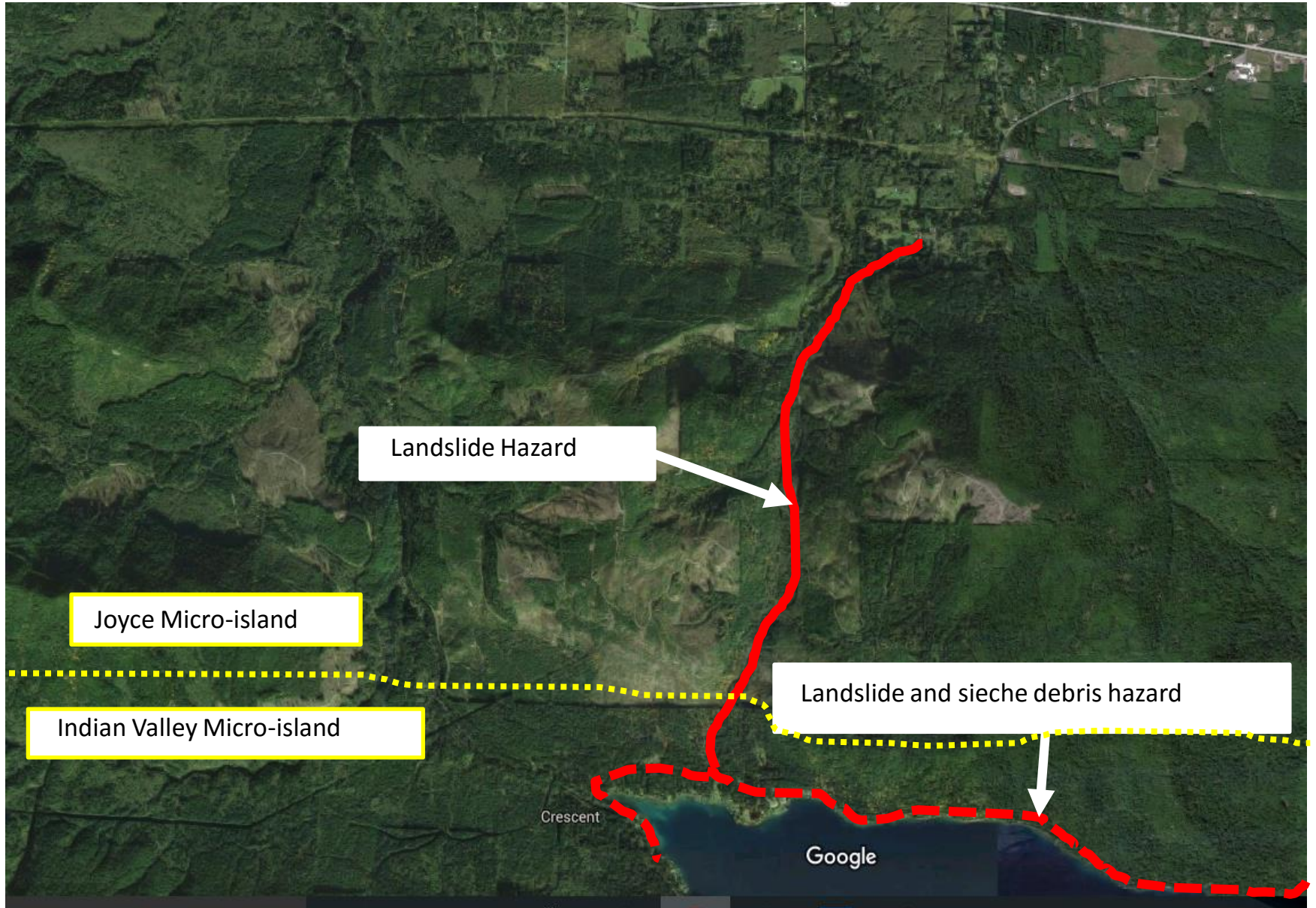
Joyce Micro-island, HWY 112 from MP 46.190 to MP 50.285



Joyce Micro-island, HWY 112 from MP 38.550 to MP 46.190



Joyce Micro-island, Piedmont Road from HWY 112 to Lake Crescent



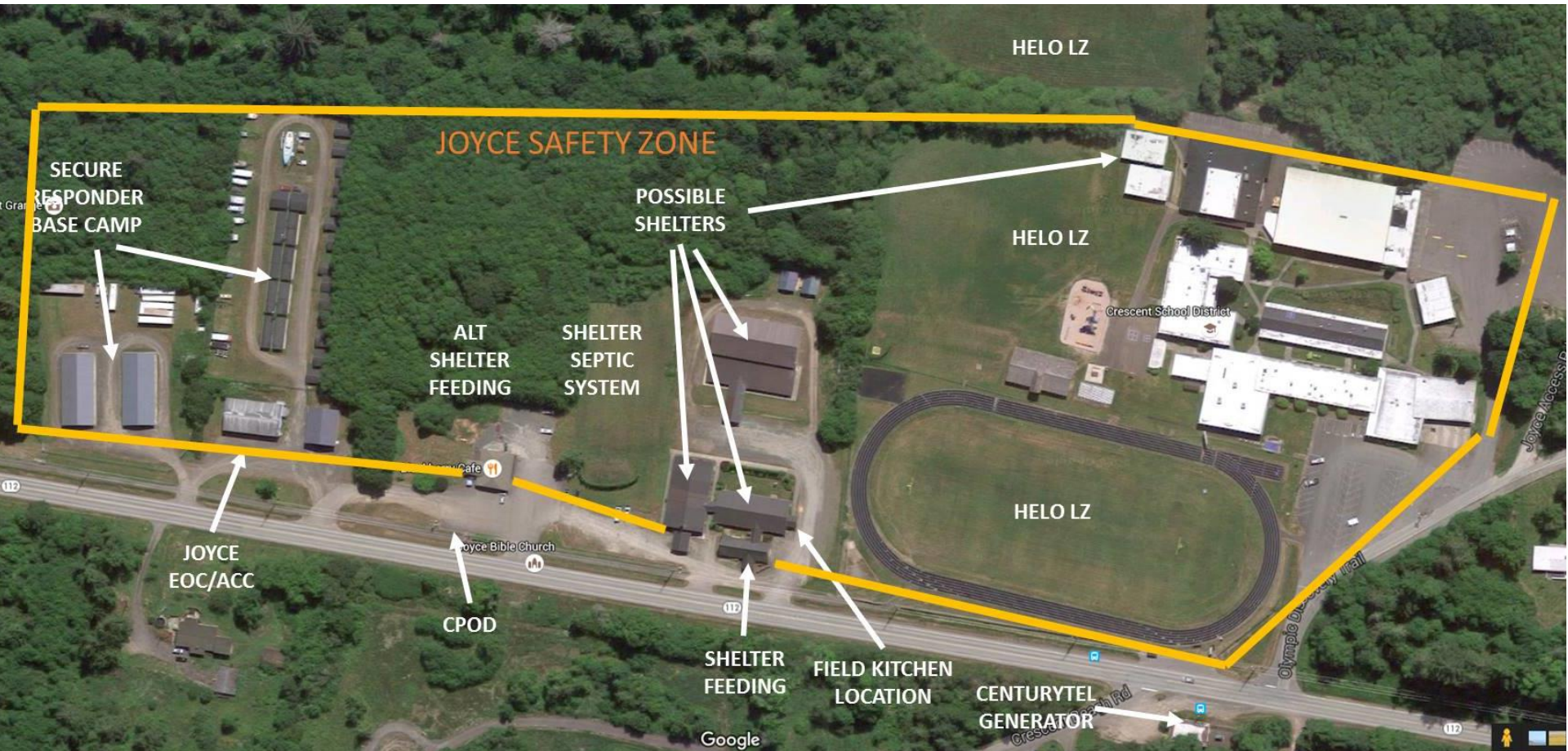
MISSION – Develop and prepare to implement a survival strategy for residents and visitors trapped on the JOYCE micro-island using only materials on site for the first 10 days **AND**, be prepared to carry out strategy for an additional 20 days with minimal support outside support.

- 1. Escape the tsunami by moving to high ground above 40 feet in 40 minutes.**
- 2. Shelter on high ground until tsunami danger is passed - 36 hours.**
- 3. Except for those in the Lyre River, Crescent Beach, Salt Creek, Place Road tsunami zones, shelter in place in remaining safe shelters until help arrives.**
- 4. Conserve fuel – drive only in an emergency. Fuel will be restricted to emergency vehicles and construction equipment.**
- 5. CCFD#4 moves at risk residents and travelers to safe shelter in Joyce.**
- 6. ACC#3 does reconnaissance of Pillar Point and Indian Valley micro-islands.**
- 7. ACC#3 prepares to shelter survivors from Pillar Point and Indian Valley.**

EXECUTION – Clallam County Emergency Management (CCEM), CCFD#4, Coast Guard and interested residents meet to plan survival strategy for Joyce residents and travelers.

- 1. CCFD#4 conducts rescue, recovery and response operations as directed in its Delegation of Authority from the Clallam County Commissioners.**
- 2. CCFD#4 implements the Joyce micro-island plan.**
- 3. Area Command 3 (CCFD#4 Incident Commander) releases the Shelter Cache, Joyce Emergency Planning and Preparedness (JEPP) group sets up shelter per shelter plan.**

AREA COMMAND 3 – JOYCE PLAN



General Recommendations for Joyce Response Plan

In order to facilitate rescue and response efforts, CCFD#4 plans to:

- 1. Establish a “rally point” for Area Command 3 between the fire station and Crescent School on HWY 112. The location is close to potable water, sewage disposal, alternate cooking facilities, secure storage, Area Command Headquarters facilities, helicopter landing zones and sites for responder base camps. It is close to a Centurytel emergency generator that might be rewired to power the area command center and shelter. Area Command Headquarters will be at the Joyce Mini-storage.**
- 2. Authorize JEPP and the Joyce Bible Church to open a Red Cross accredited shelter in the surviving Joyce Bible Church and/or Crescent School buildings. Capacity is planned for 300 people for 3 weeks.**
- 3. Reserve all fuel for emergency services and construction equipment to reopen roads.**
- 4. Move school busses to the Area Command Center as soon as possible for use as warming shelters until the shelter is opened and for transportation of evacuees and distribution of supplies.**

- 5. First, reopen HWY 112 from the Lyre River Bridge to Freshwater Bay Road AND Freshwater Bay Road to the boat launch. This will allow evacuation of critically injured to Port Angeles and delivery of prescription drugs and needed supplies from the airport. A school bus with the seats removed will serve as a mobile Community Point of Distribution. Bus service within the Area Command may be implemented to save fuel.**
- 6. Second, reopen Place Road to the mouth of the Elwha River to connect with a temporary bridge (or ferry) to Lower Elwha Road and to William F. Fairchild Airport and Port Angeles.**
- 7. Third, reopen Piedmont Road and Camp Hayden Road for supply distribution followed by other side roads as fuel permits.**

HOW YOU CAN HELP

- **Shelter in place**
- **Help your neighbor shelter in place**
- **Share your freezer**
- **Don't drive**
- **Volunteer to help**

SHELTER IN PLACE - ASSESS YOUR SHELTER



SHELTER IN PLACE - REPAIR YOUR SHELTER



SHELTER IN PLACE - CAMP IN YOUR HOUSE



VOLUNTEERS FOR THE JOYCE AREA

SHELTER STAFF



JEPP



HAM RADIO



CERT



SHELTER STAFF TRAINING SEPTEMBER 17TH



VOLUNTEER WITH JEPP



VOLUNTEER WITH JEPP



VOLUNTEER WITH JEPP



VOLUNTEER WITH JEPP



JOYCE EMERGENCY CACHE



JOYCE CACHE HAS COTS



JOYCE CACHE HAS MRES

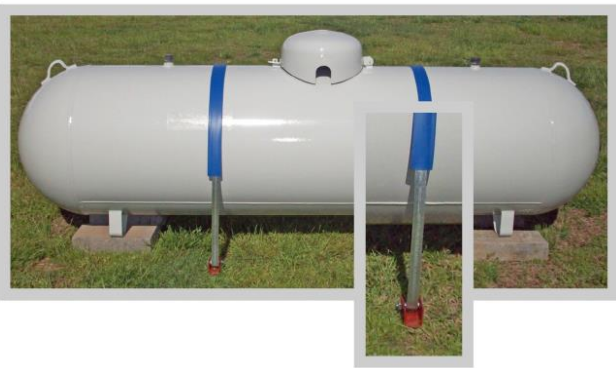


JOYCE CACHE HAS SOME FOOD

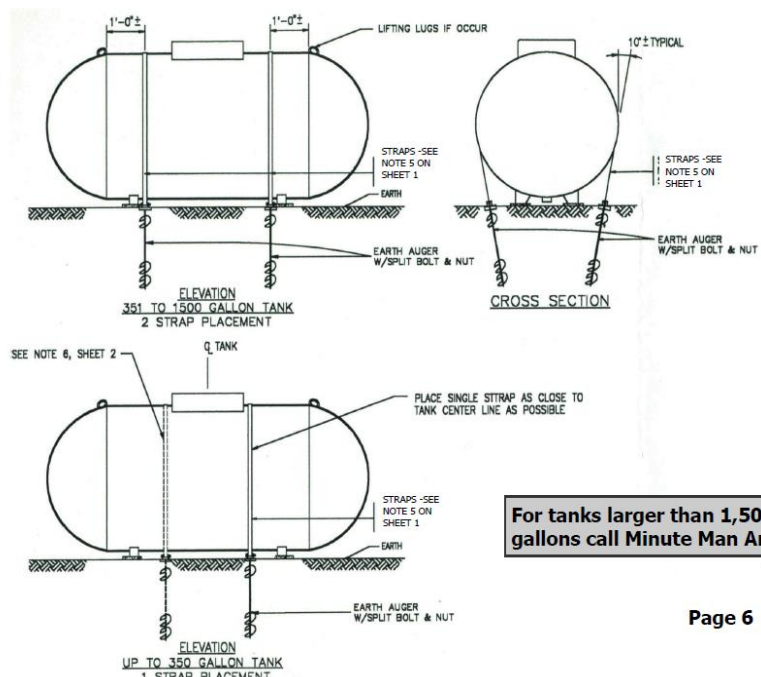


Minute Man Anchors, inc.

Galvanized G-115 Strapping for Side Mounted Tank Anchoring System



- 2 pieces of Galvanized G-115 Strapping
- 2 pieces of Vinyl Strap Sheathing
- 4 Auger Anchors or optional Concrete Anchors
- 4 Strap Bolts & Nuts



For tanks larger than 1,500 gallons call Minute Man Anchors





buckdj@olypen.com