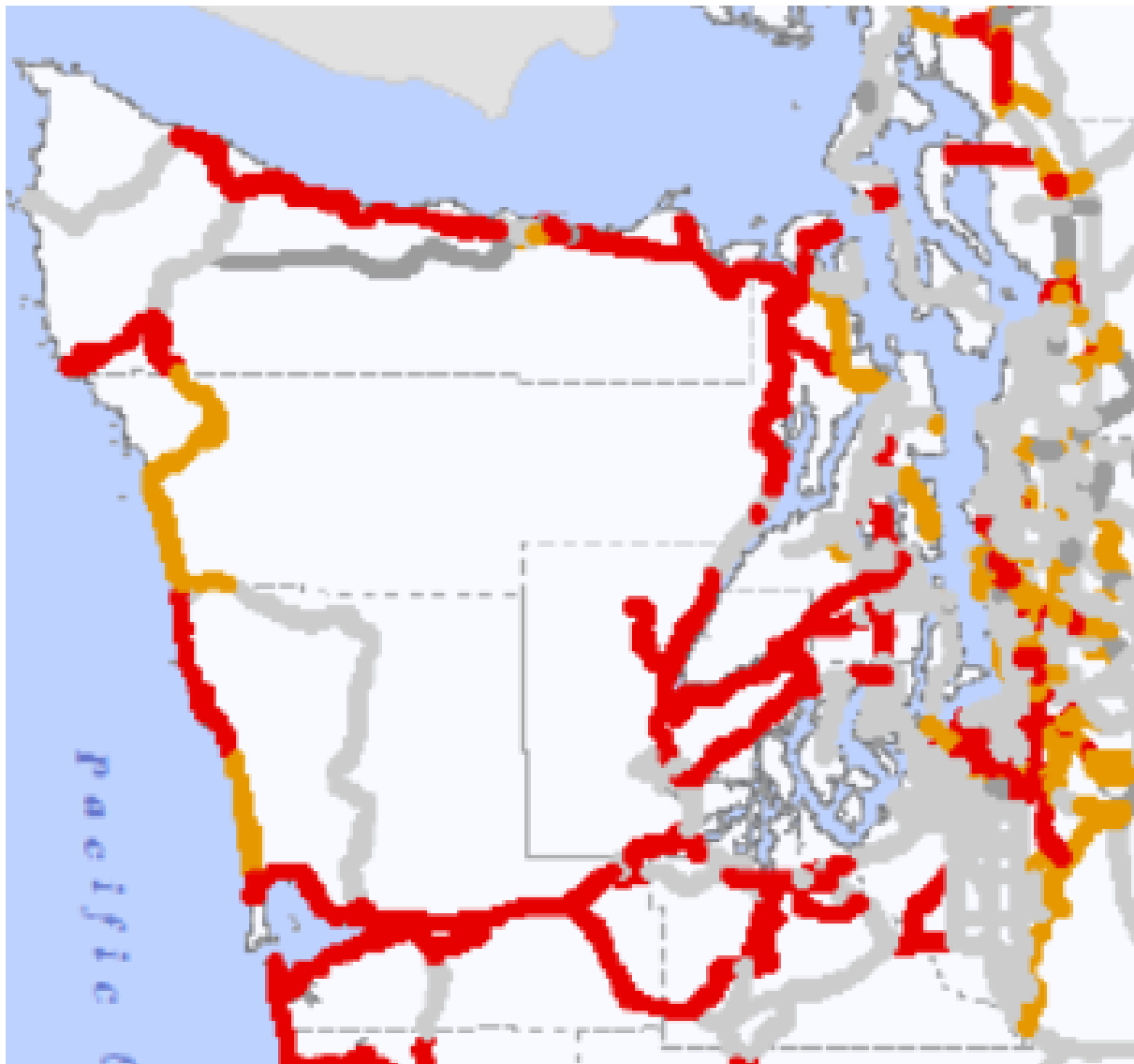


HIGHWAYS AND BRIDGES

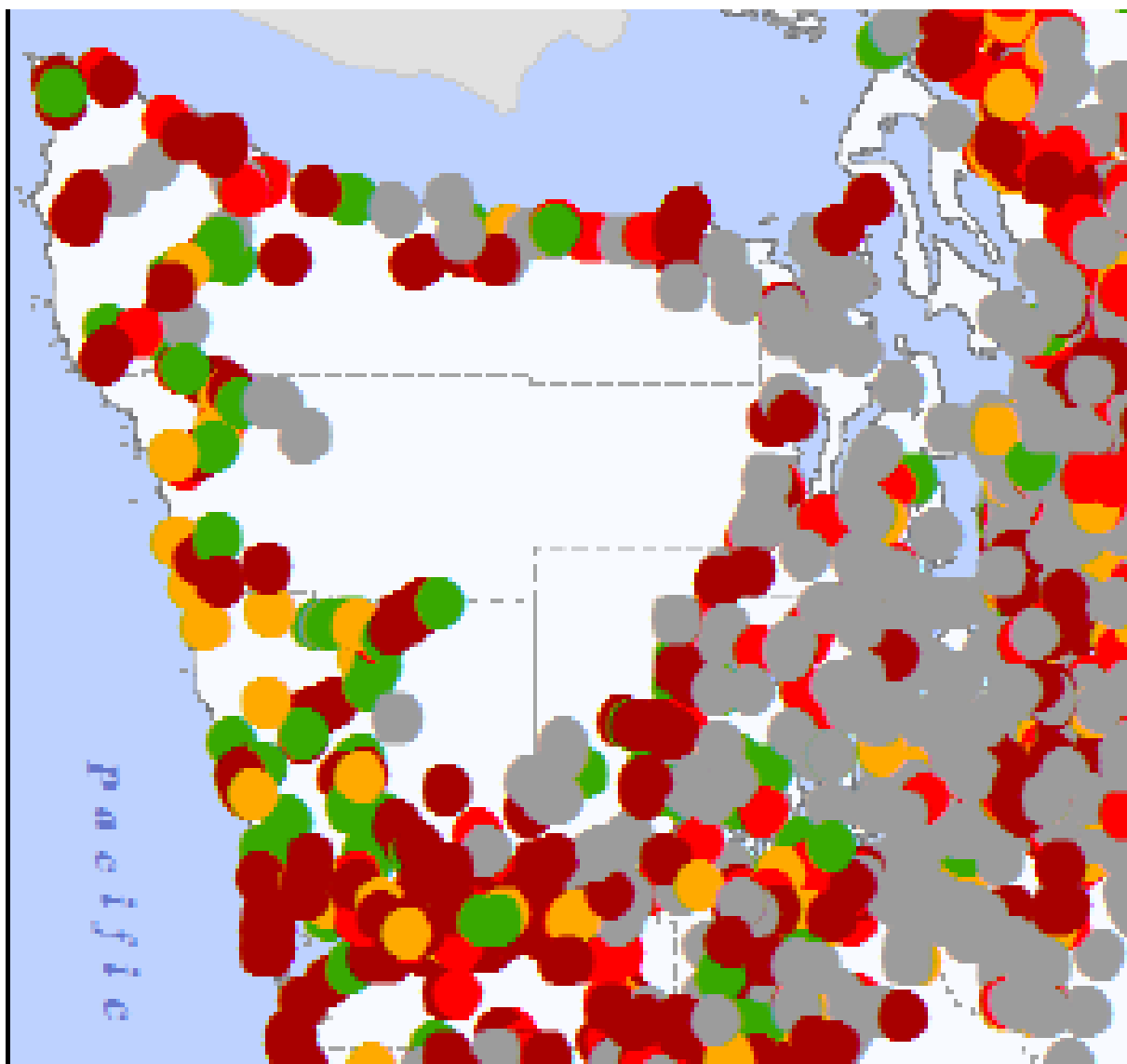
HIGHWAY



There will be no surviving ground routes to the county.

80 % of the roads will suffer pavement failures over 3"

BRIDGES



23% of coastal area bridges will be out of service for days.

50 % of Coastal bridges will be damaged and unusable.

no damage ● ● ● ● completely destroyed

What We Mean by Road Damage



**Christchurch
New Zealand
November 14,
2016 7.8
Magnitude
Quake**

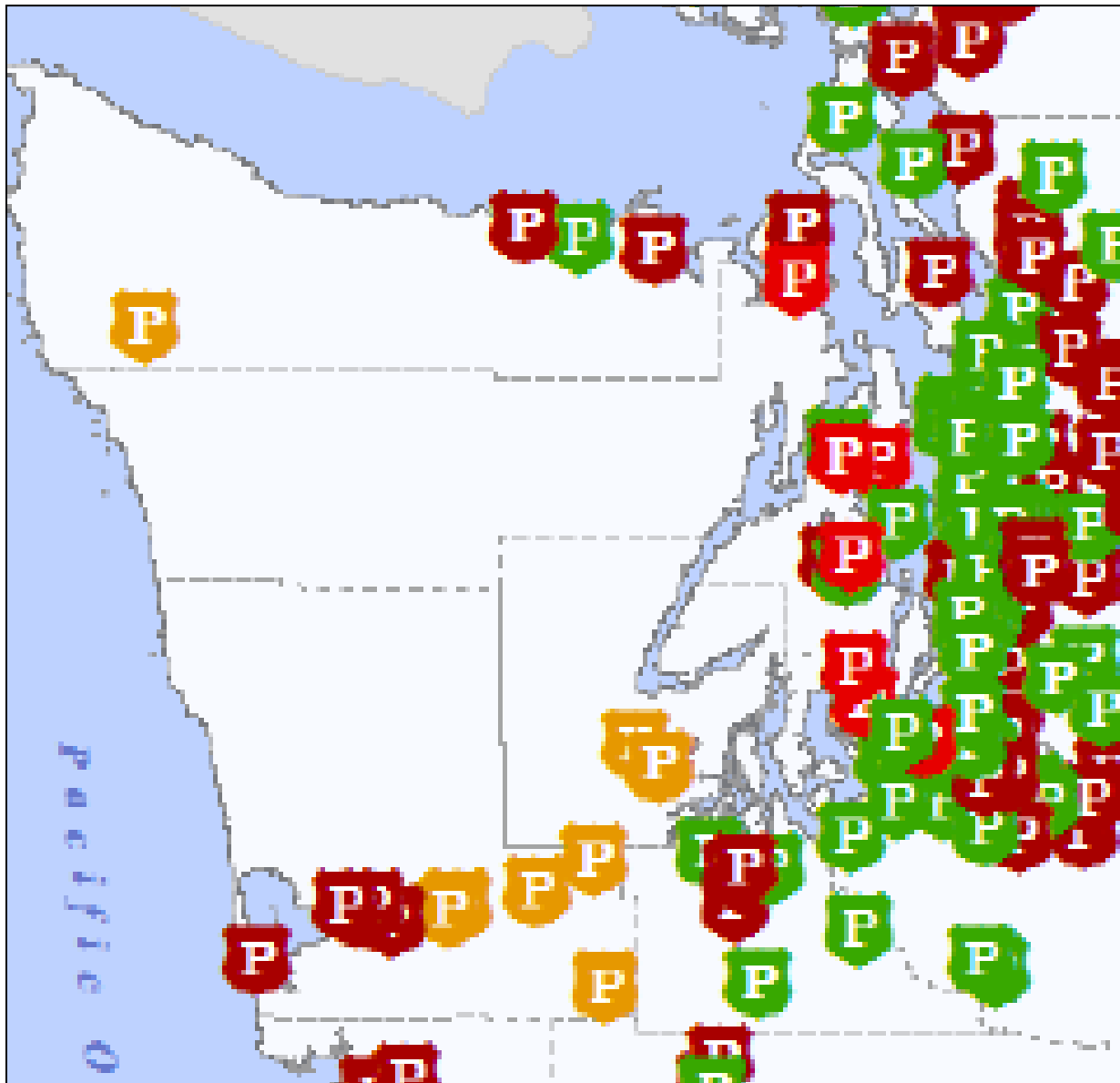
**24" Vertical
Displacement
with 4-6 foot
Horizontal
separation of
the roadway**

**12" Vertical
Displacement
with 1-2 foot
fissure in the
roadway**



LAW ENFORCEMENT AND FIRE SERVICES

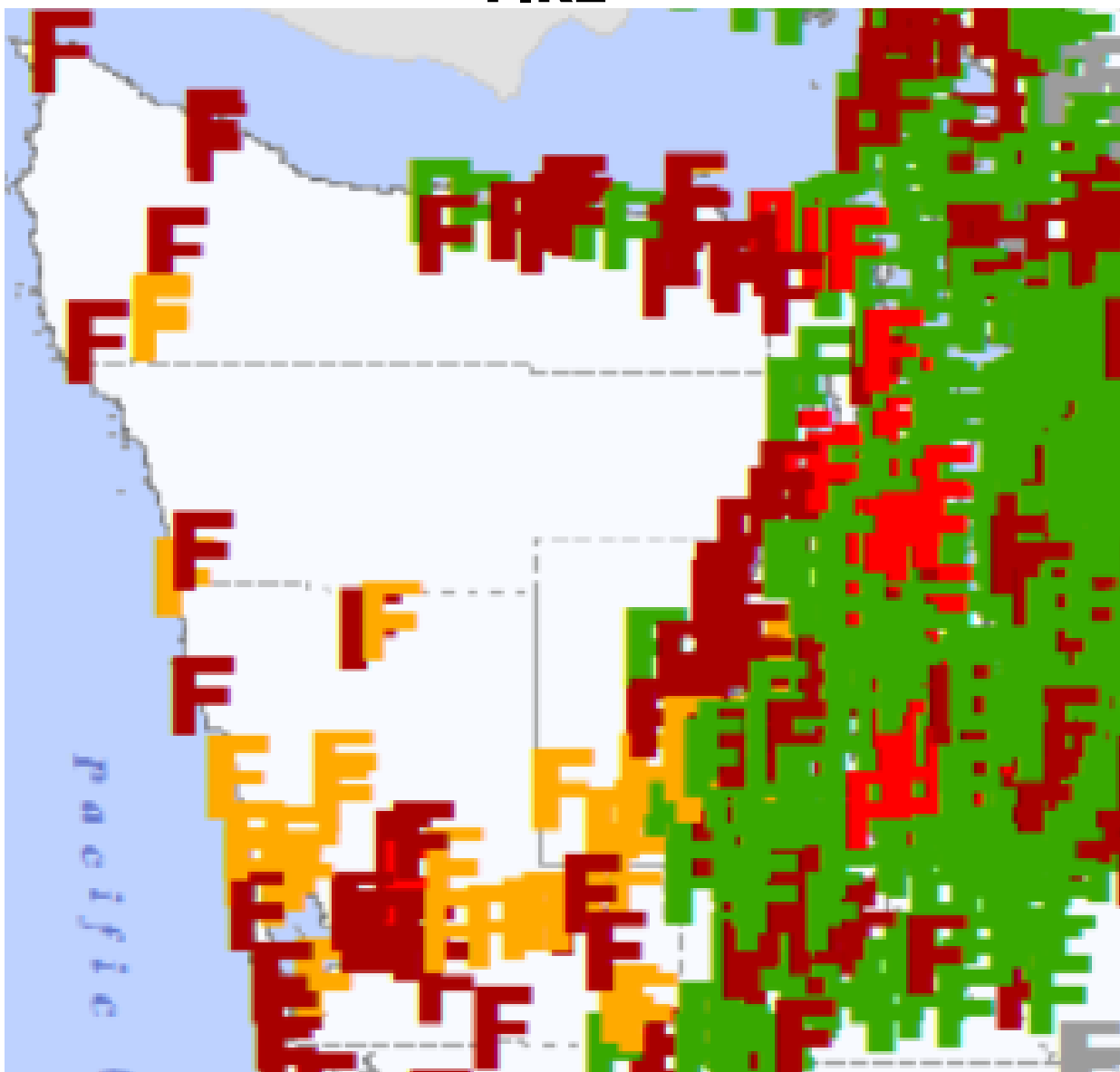
LAW



48% of police facilities will be unusable.

5% will be capable of 50% capacity

FIRE



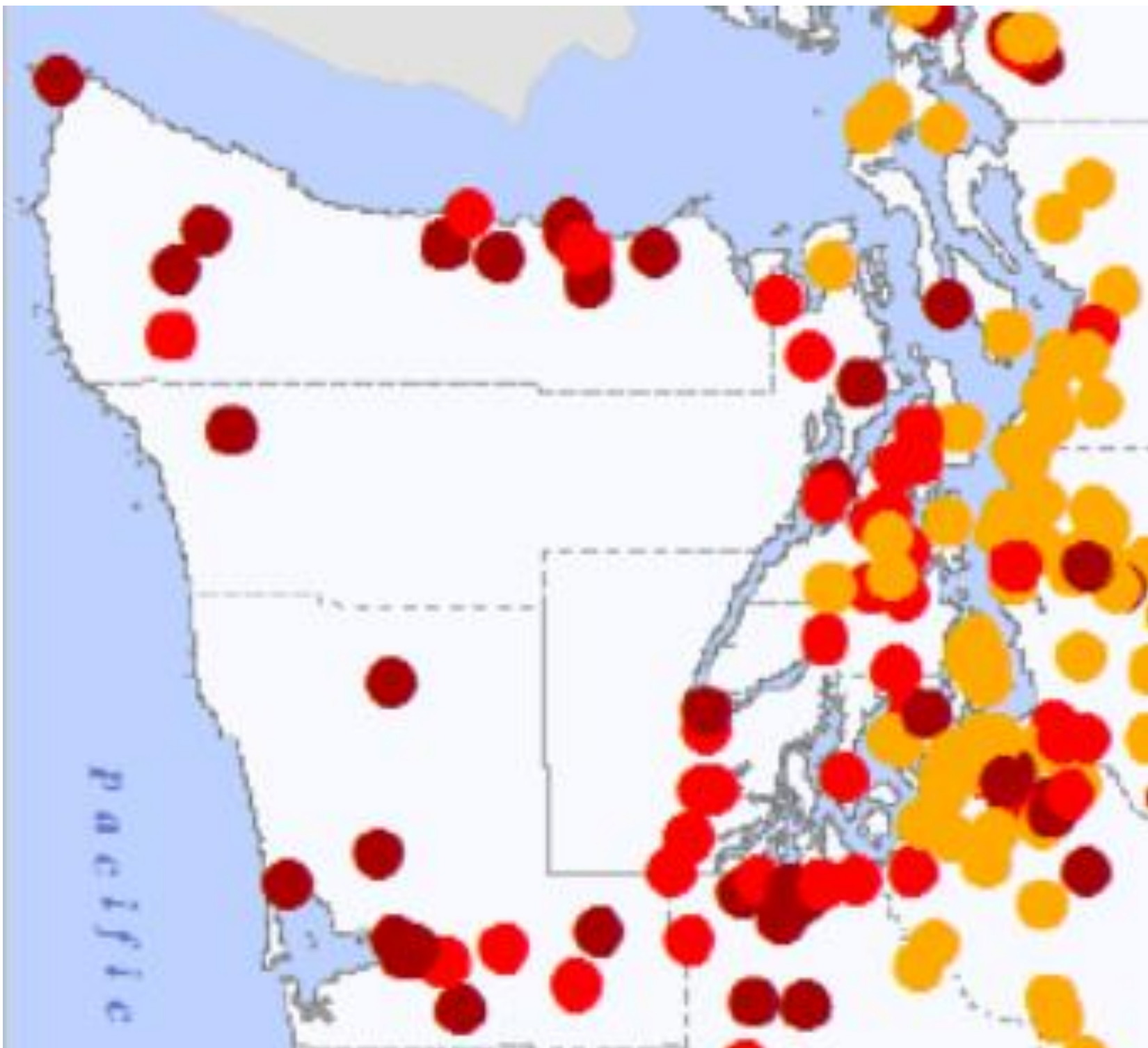
Significantly reduced fire fighting capability west of Shelton.

Damage to highways, bridges, and communications renders mutual aid agreements impractical.

no damage      completely destroyed

HITRAC STUDY FEMA

COMMUNICATIONS



After the CSZE, the county will experience phone, cell phone, internet, radio and TV outages lasting for months.

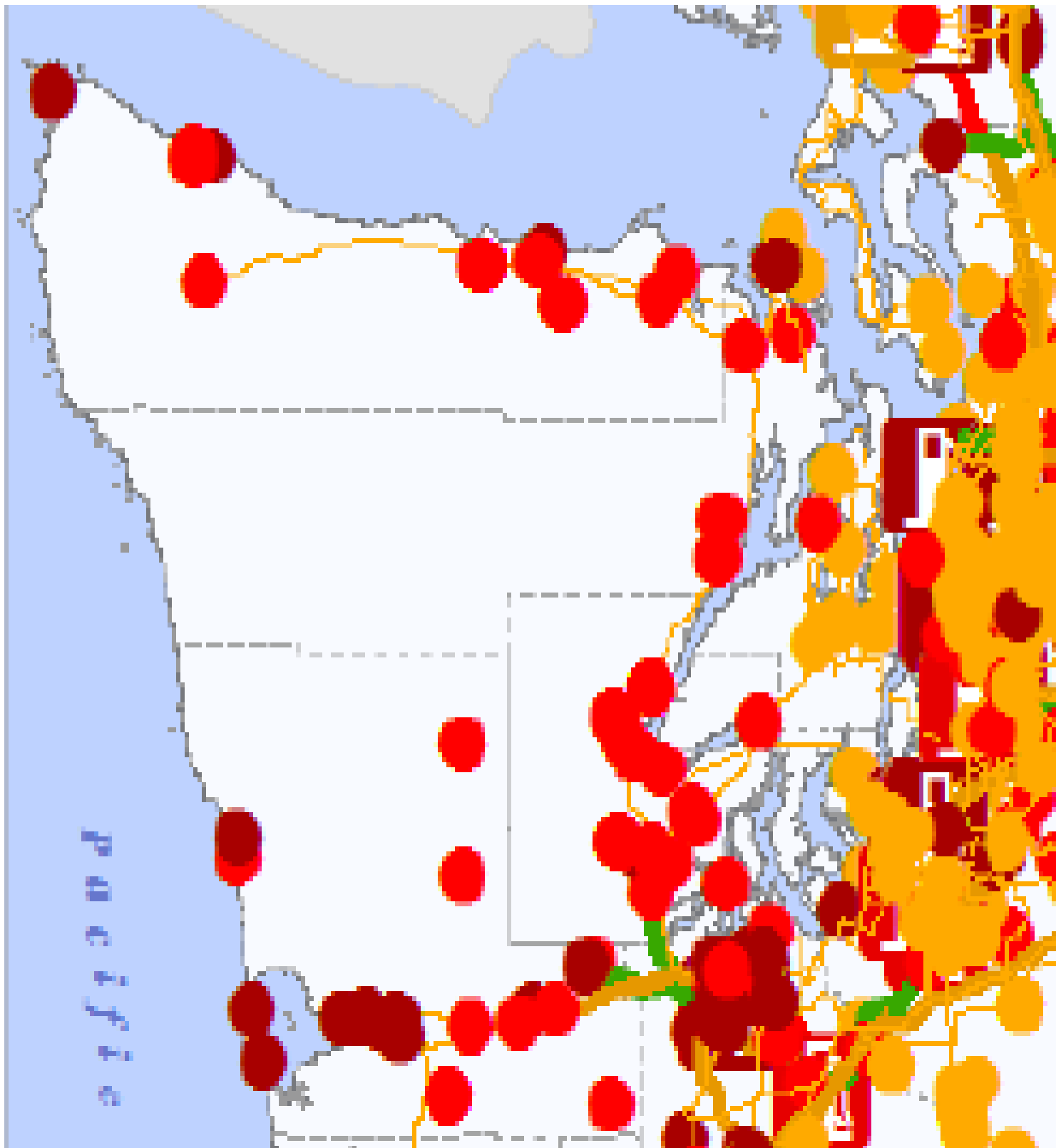
It may take days or weeks to restore 33% of coastal communications facilities.

67% may need to be replaced.

no damage ● ● ● ● ● *completely destroyed*

HITRAC STUDY FEMA

UTILITIES



ELECTRICAL GRID

100% will be severely damaged or destroyed.

It may take up to 1 year to restore service to 90 % of the current demand.

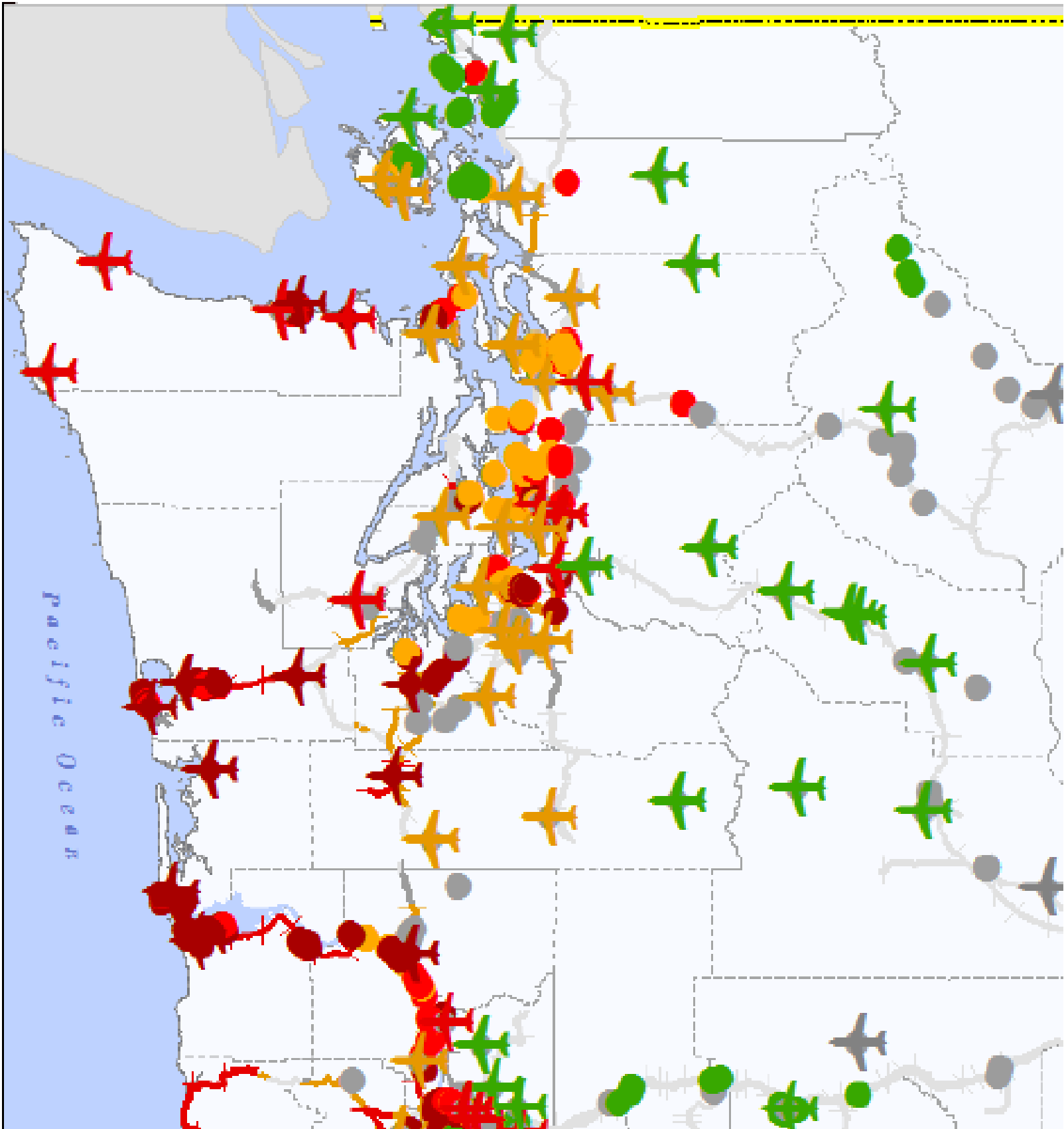
WATER AND SANITARY SEWER

100% will be severely damaged or destroyed. 67% of water may be restored as power is repaired. 33% must be rebuilt.

44% of sewer may be restored as power is repaired. 56% must be rebuilt.

no damage ● ● ● ● ● *completely destroyed*

AIR TRANSPORTATION



Most airport structures* west of the I-5 corridor suffer complete to severe damage.

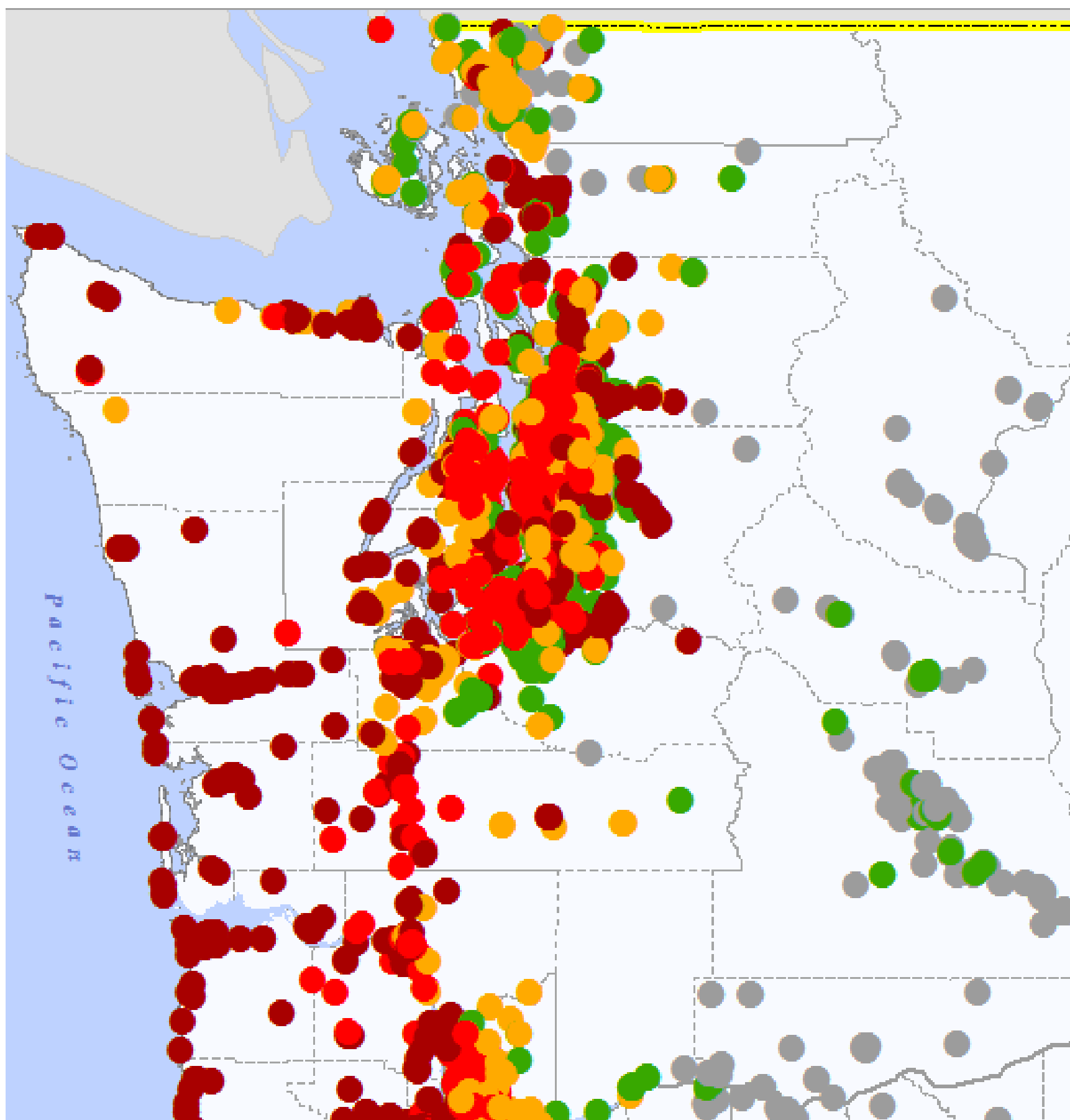
Most airport structures* along the I-5 corridor suffer severe to moderate damage.

*high probability runways intact

no damage ● ● ● ● ● completely destroyed

HITRAC STUDY FEMA

SCHOOLS



There are approximately 2,286 schools in the affected area.

Nearly 100% of schools West of the I-5 corridor suffer complete or severe damage, and are likely unusable.

Schools along the I-5 corridor suffer a wide range of damage from complete to slight.

Schools nearest the epicenter generally suffer the most significant damage resulting in limited shelter capacity West of the I-5 corridor.

no damage ● ● ● ● ● completely destroyed