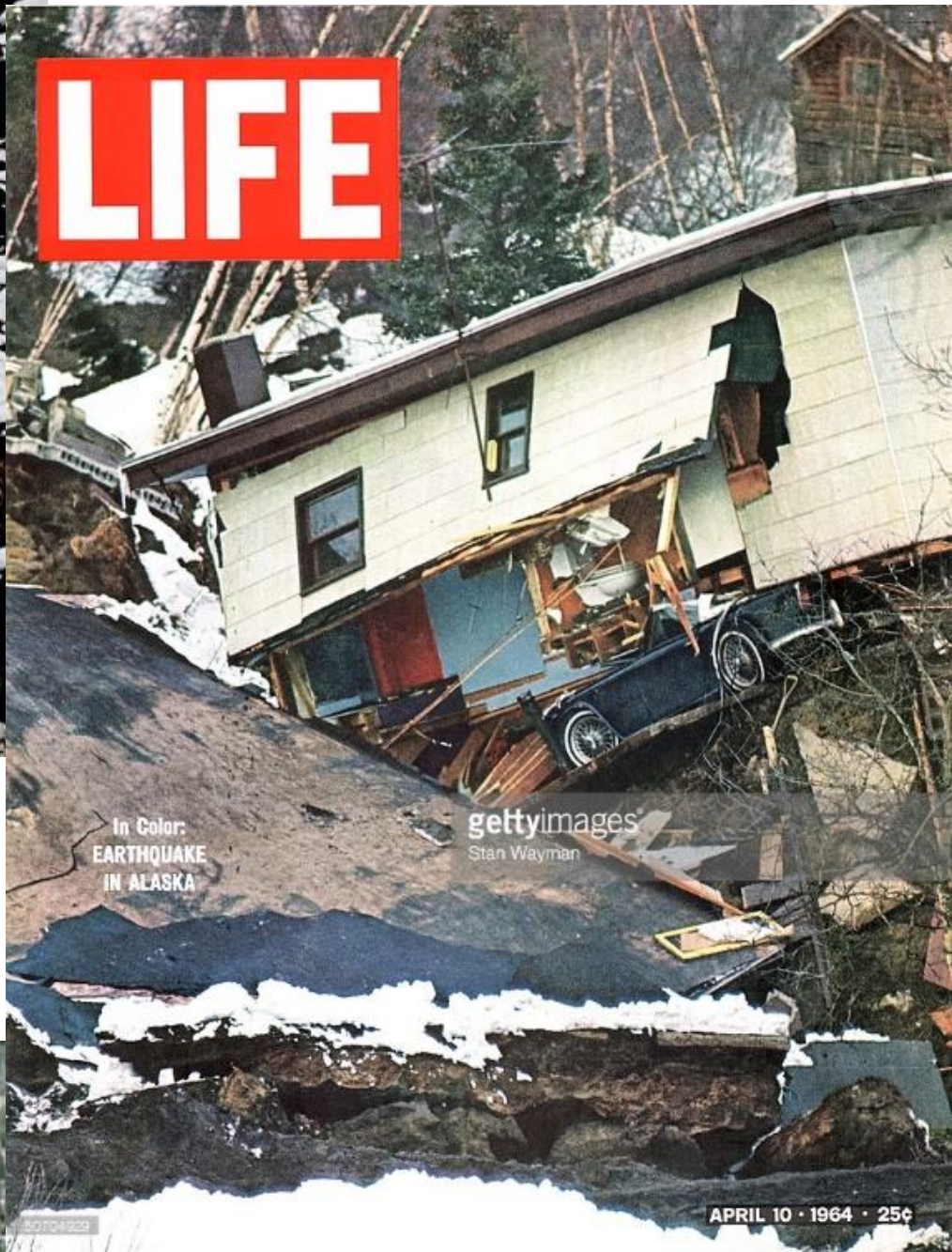
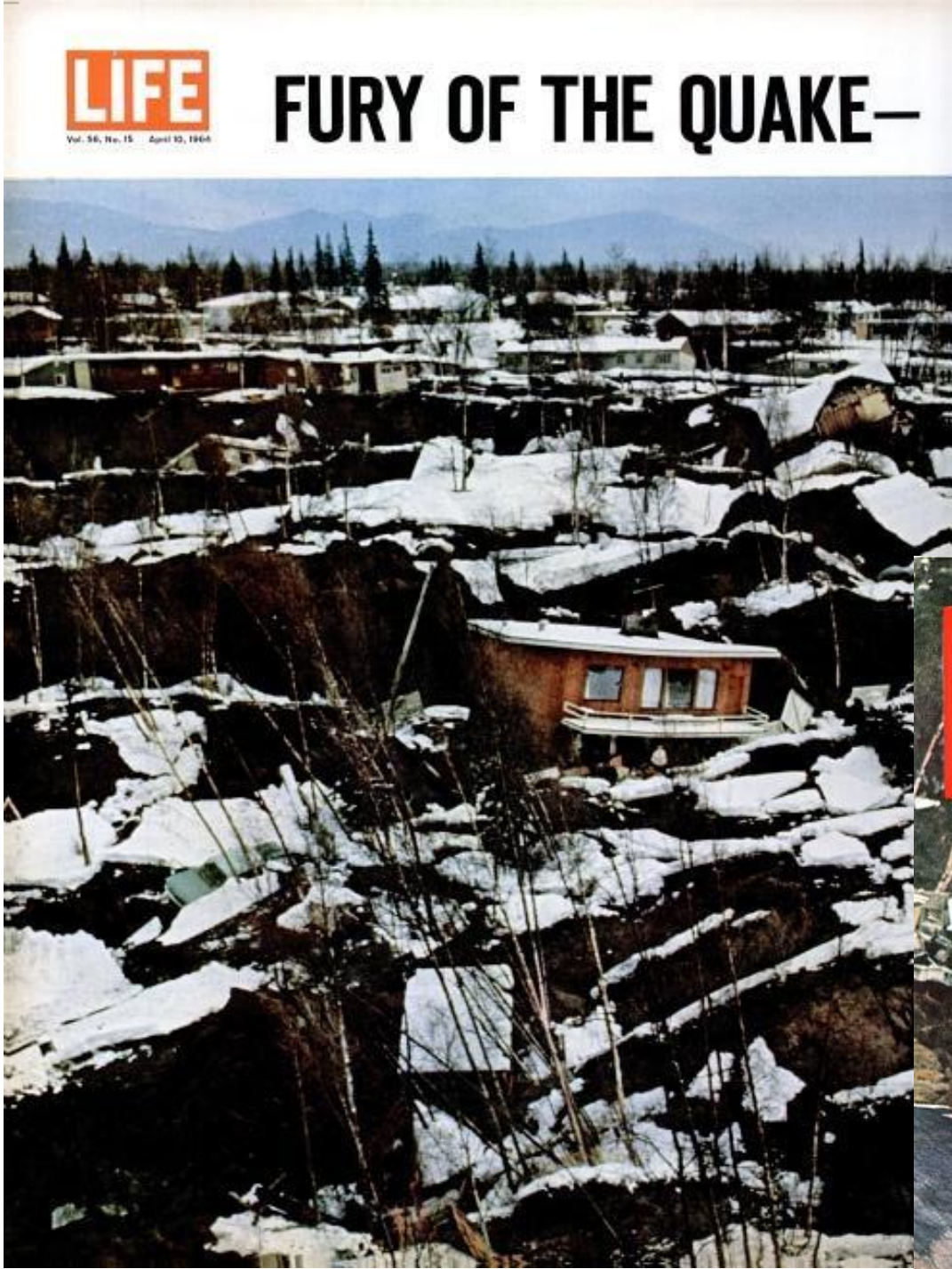
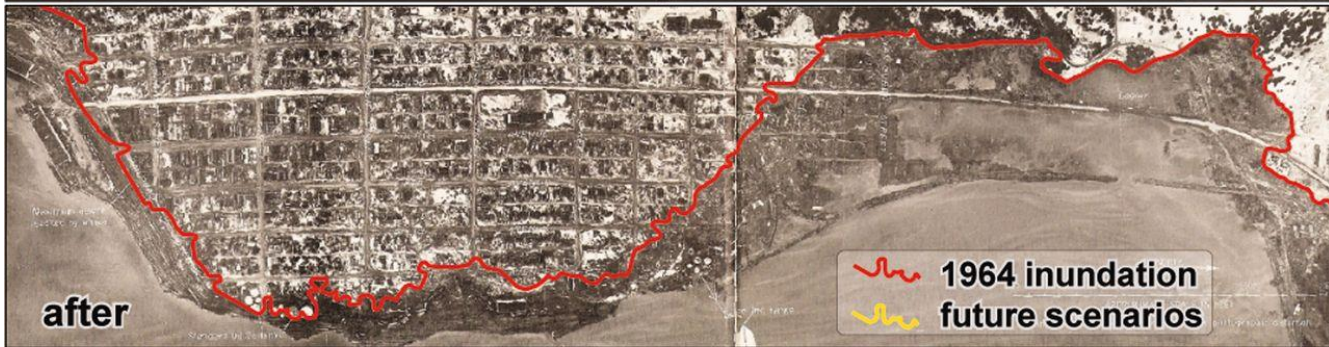
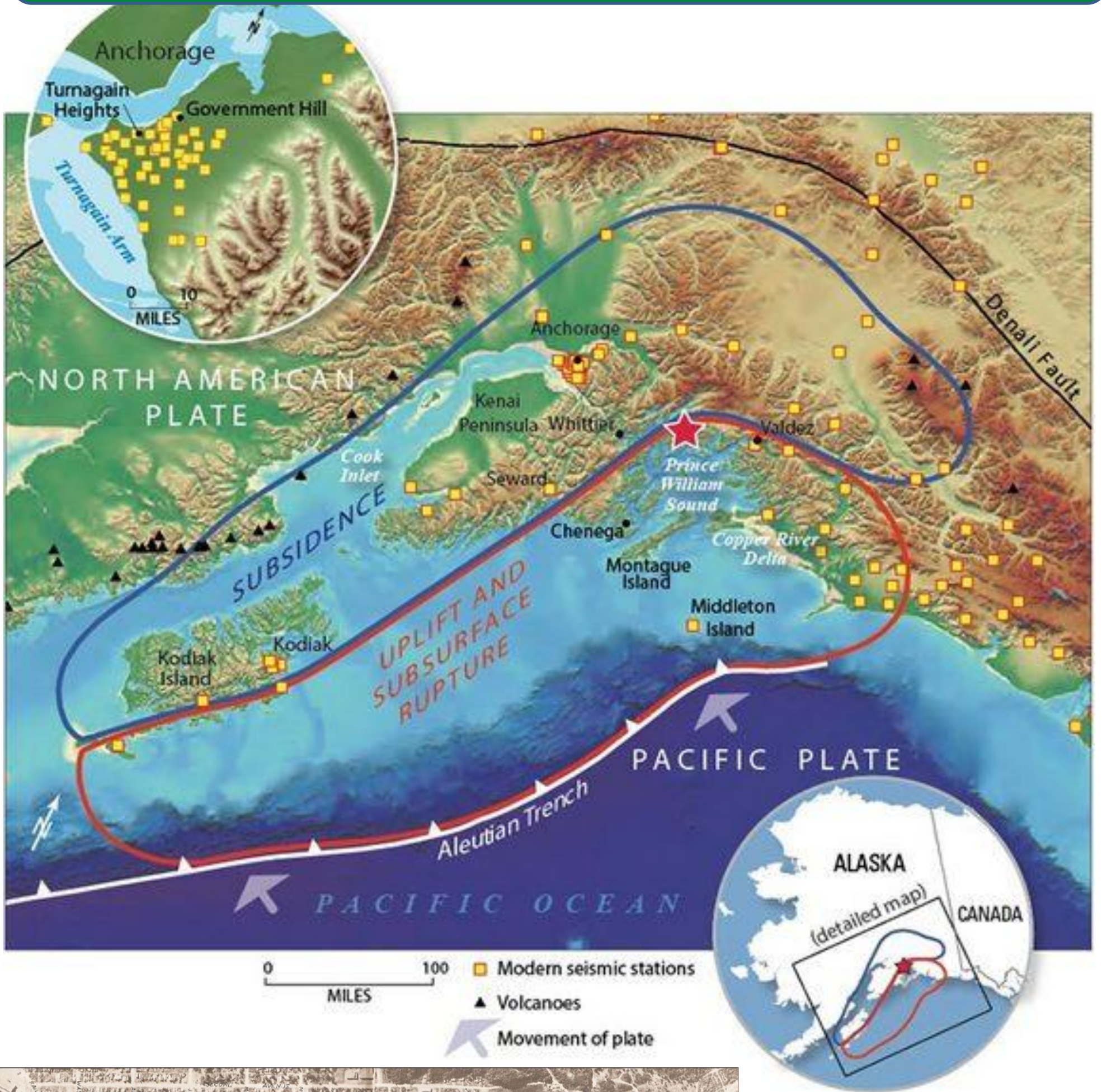


1964 9.0 Anchorage Quake



Overview of the Anchorage Area



Tsunami

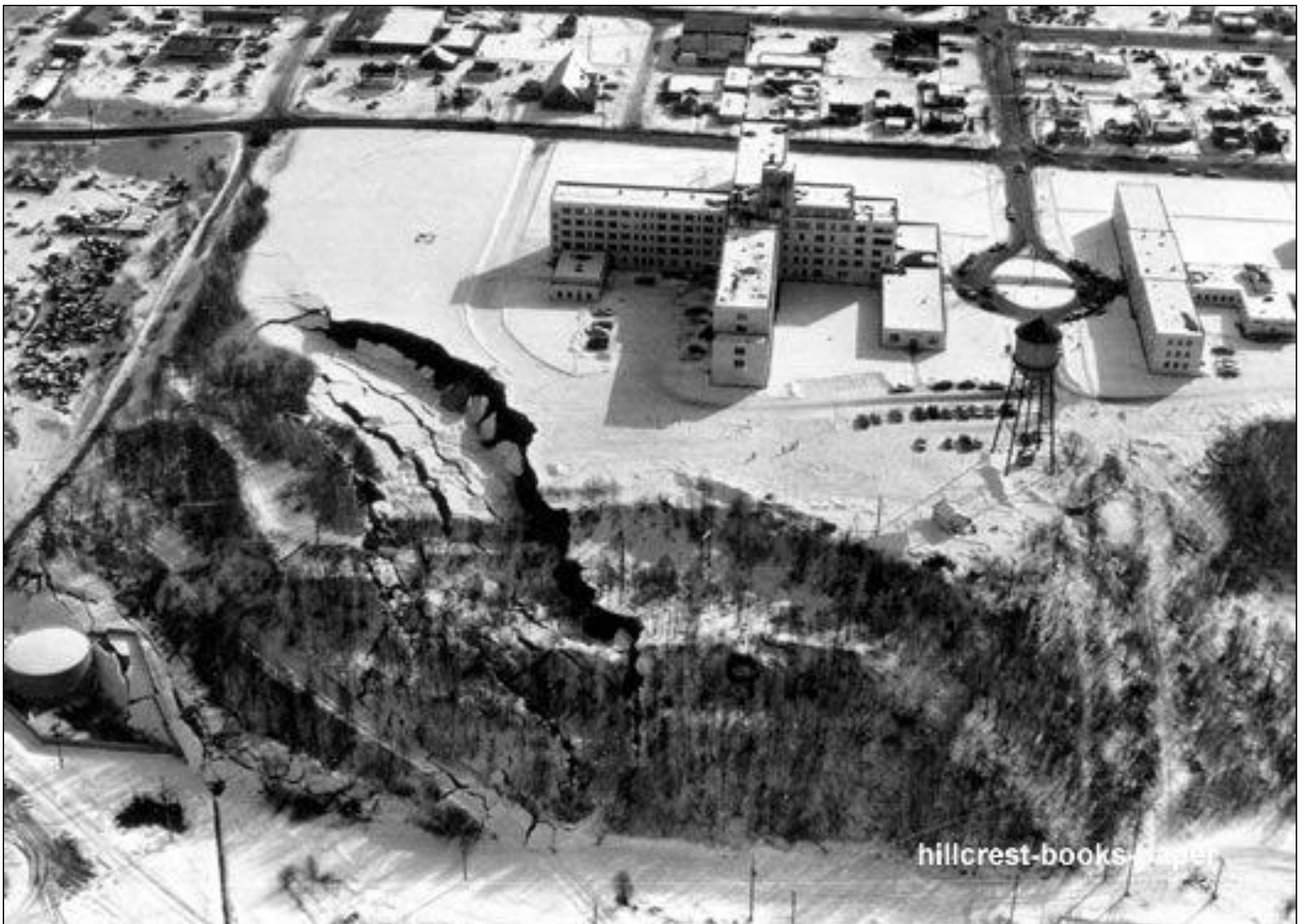
Tsunami Action Pushed Material Inland & Fire Breaks Out



Shops To Left Dropped 8 Feet

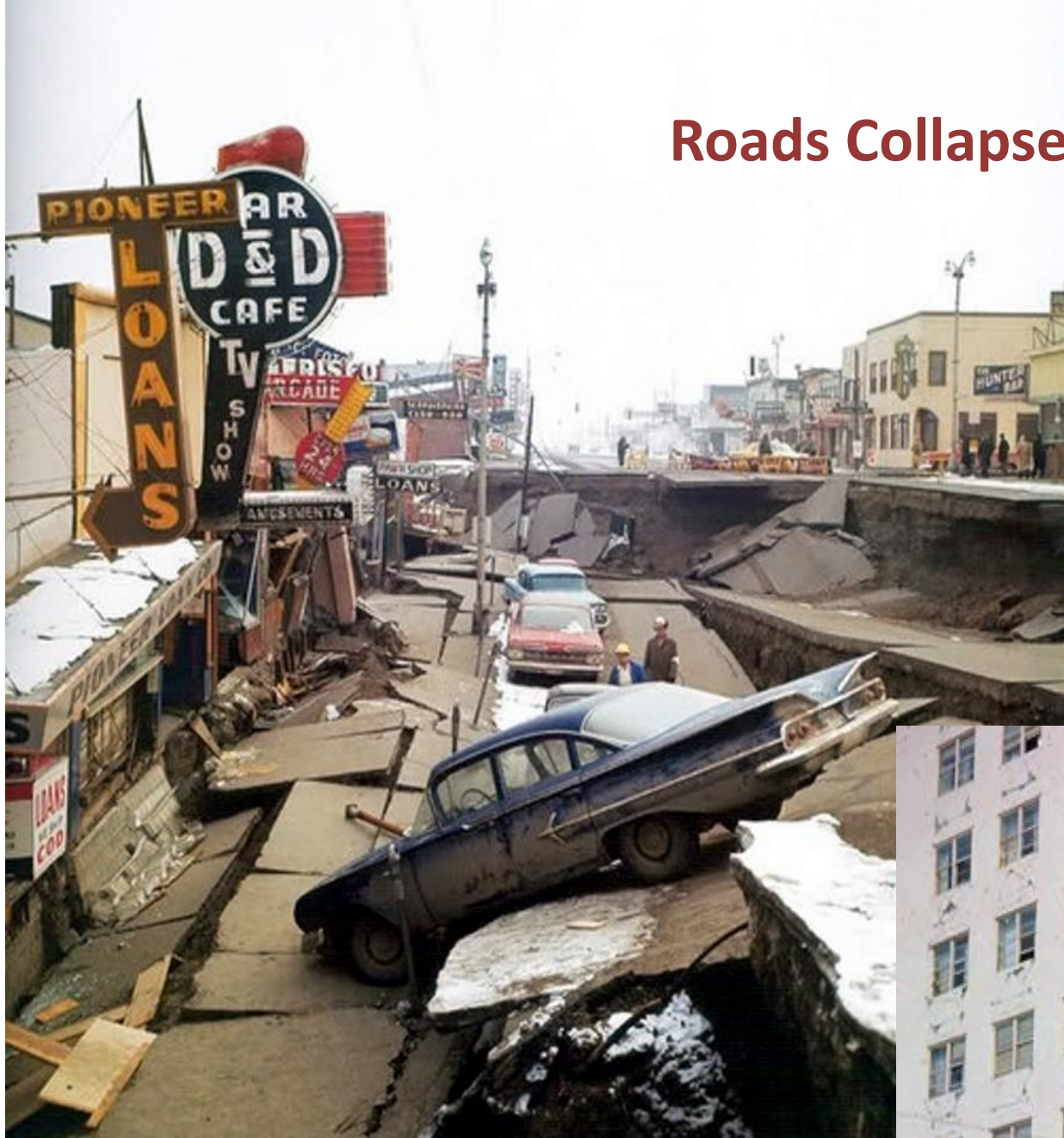


Hillside Behind Hospital Collapsed



Damage in Commercial Center

Roads Collapsed



McKinley Tower



4 Seasons Apartment Complex



TurnAgain Neighborhood Suffers a Landslide

Landslide Movement at Turnagain Heights

Onset of ground shaking



After 1 1/2 minutes



After 5 minutes



After 6 minutes



TurnAgain Neighborhood Suffers a Landslide



Earthquake damage at Turnagain, Anchorage, Alaska 1964



Same neighborhood today



Road through the center of TurnAgain Heights Neighborhood



Road & Rail System Suffer Displacement

