

“CERT Saves Lives”



Proudly Sponsored by Clallam Fire Districts 3 and 4

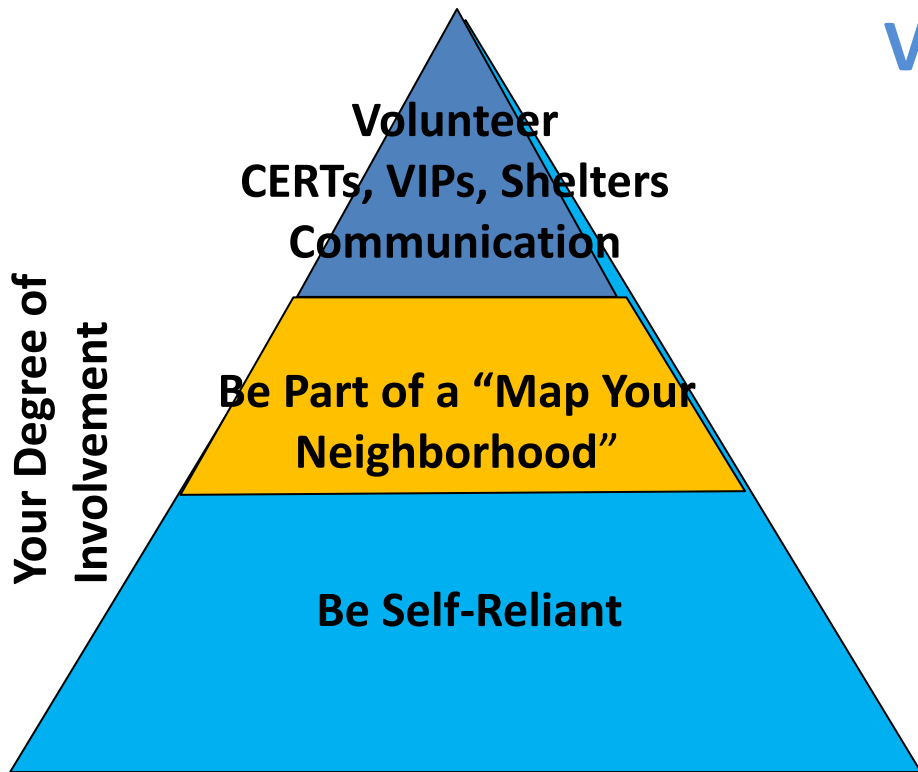


*Trained to Type IV Search & Rescue Unit - Basic

- **Advanced Trained CERT Tier II Search & Rescue Teams are operating in Eastern Clallam (Gardiner to Deer Park Road) & Joyce*.**
- **Ten Teams meet monthly to reinforce training.**
- **Trained to rescue trapped victims in lightly to moderately damaged structures**
- **Individuals with moderate physical abilities can do this – i.e. can you walk?**
- **You are part of the Fire Service Response to “Save Lives” in a Disaster**
- ***Help us start a team in your neighborhood!***

How Citizens Can Help The Plan

Citizens must help in the life safety aspects of the plan for the community. Remember there is only 1 Emergency Responder (Local, State & Federal) per 180 people in Clallam county and only 1/3 are on duty.



Volunteer

- Join CERTs, save lives and support Search and Rescue.
- Join VIPs and assist Law Enforcement in their duties.
- Join Church members and/or Red Cross and help with shelters.
- Join ARES as a HAM radio operator to help with Command Center Communications.

Join MYN -

- Help in the damage assessment in your neighborhood. Check and Assist your neighbors.
- Secure utilities.
- Provide First Aid to those that need it.

Do Not add to the burden for limited supplies -

- Stock 30 Days of Food and Water.
- Keep 30 Days of Medications.
- Keep 30 Days of Pet Food.
- Have a little extra for family neighbors & friends.
- Shelter in your own house and have supplies to repair it so you can.

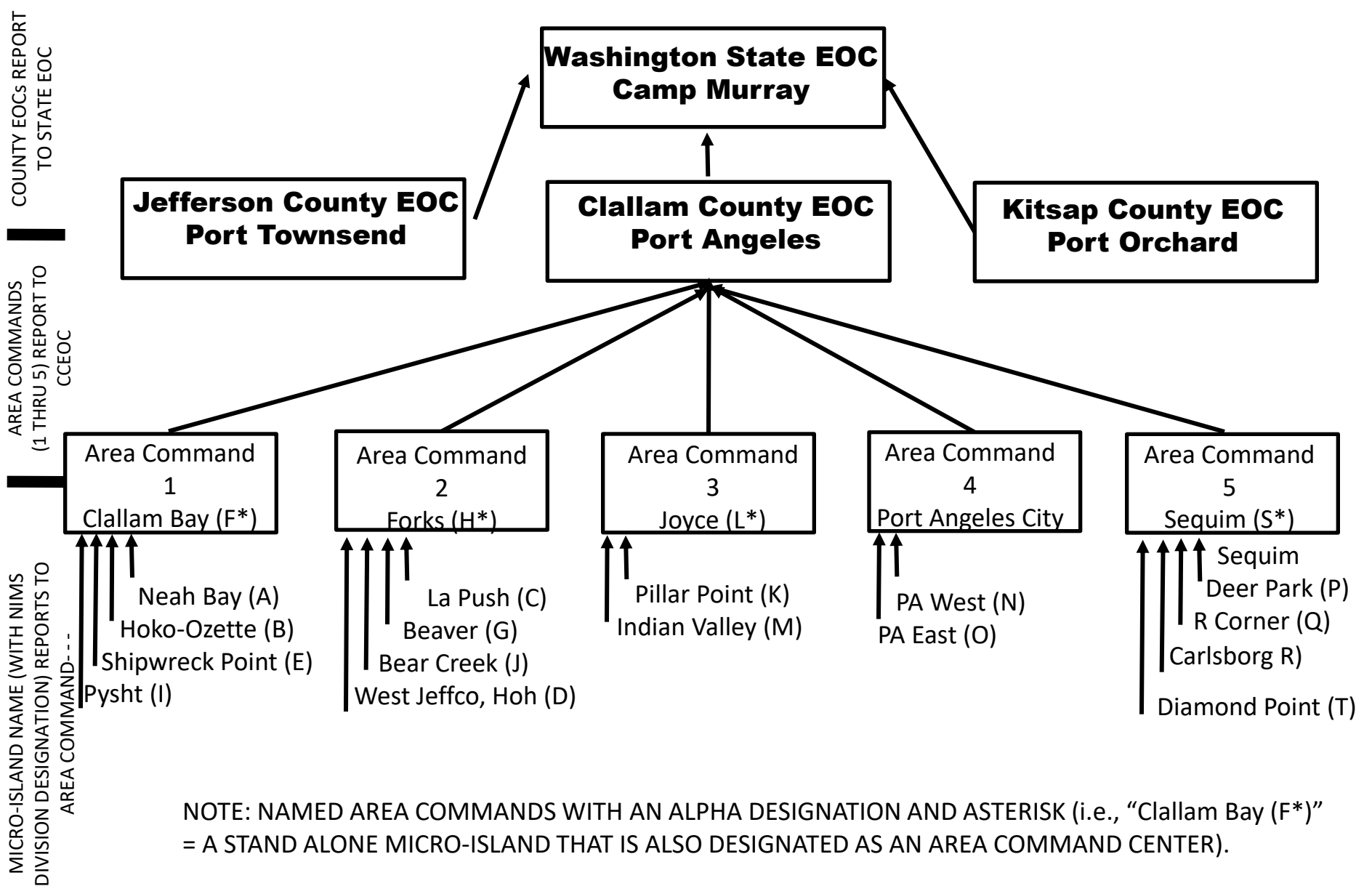
SEARCH AND RESCUE STRATEGY FOR CLALLAM COUNTY

Clallam County Fire District #3

Triage our Resources

- Build Map Your Neighborhood (MYN) Program into 80% of the communities
- Use CERT teams with FD Personnel to do Damage Assessment and Search of neighborhoods
- MYN groups can tell CERT teams what hasn't been clear
- CERT assesses those structures and performs rescues that they can safely execute
 - MYN can reduce by 60-80% the number of structures we actually have to check.
 - CERTs focus on the remainder
 - Saves highly skill Fire resources for the most pressing need
 - Commit Engine Companies to difficult, commercial or high number of trapped locations
 - Commit USAR to Multi-story collapsed structures or tsunami areas

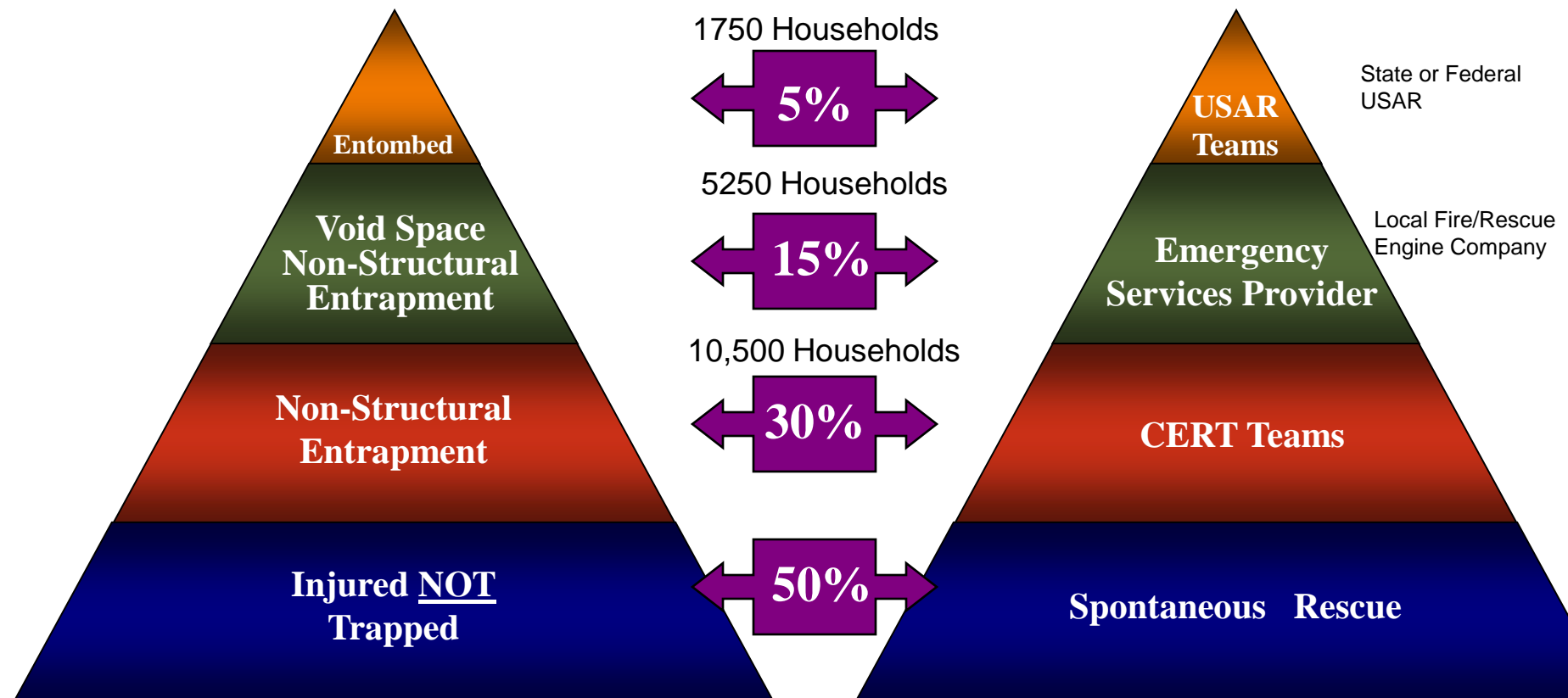
CLALLAM COUNTY EMERGENCY MANAGEMENT AREA COMMAND CONCEPT



SEARCH AND RESCUE

Challenge for Clallam County is over 35,000 Households and all commercial and public buildings will need to be searched for survivors

Rescue Skills Needed



THE GOLDEN DAY

Entrapped Victim Survival Rate

Creation and deployment of Mission Ready CERT units will be critical in saving lives.* CERTs primary mission after an earthquake will be Damage Assessment & SAR.

Time Until Rescue Survival Rate

Time Until Rescue	Survival Rate
30 Minutes	99.3%
1 Day	81.0%
2 Days	36.7%
3 Days	33.7%
4 Days	19.0%
5 Days	7.4%

The Rule of 3's

- You can survive:
 - 3 minutes without **AIR**
 - 3 hours without **SHELTER** from extreme weather
 - 3 days without **WATER**
 - 3 weeks without **FOOD**

*Will impact entrapment, isolation, and fragile population numbers

WHAT IS CERT ?

About CERT

The Federal Emergency Management Agency, using the model created by the Los Angeles City Fire Department, began promoting nationwide use of the Community Emergency Response Team (CERT) concept in 1994.

CERT Benefits

Emergencies occur in our communities every day and a large-scale disaster (such as an earthquake) will quickly overwhelm local professional responders.

CERT training provides practical skills necessary to:

- Safely assist family, and neighbors
- Become better prepared for disaster
- Support professional responders, as directed, once they arrive at the scene



For more information, call **Pat Baxter (714) 308-1959.**

MYN *Map Your Neighborhood*

In a disaster, your most immediate source of help, are the neighbors living around you.



In Map Your Neighborhood you will learn:

- Steps to take immediately following a disaster.
- To develop a neighborhood skills and equipment inventory.
- To map your neighborhood and identify areas of concern such as propane tanks.
- Verify which neighbors need extra help in a disaster such as the elderly, those with a disability or children who may be home alone.
- Map Your Neighborhood classes take only 90 minutes to complete!

For more information contact: **Penny Linterman,**
(360) 417-2483 or **plinterman@co.clallam.wa.us**

CERT TRAINING

Basic CERT Training

24 Hours of Training covering:

- Disaster Preparedness
- Fire Safety
- Disaster Medical Operations — triage and Treating Life Threatening Injuries
- Disaster Medical Operations-Assessment, Treatment, and Hygiene
- Light Search and Rescue
- Team Organization
- Disaster Psychology
- Terrorism and CERT
- Course Review and Disaster Simulation



Communications

Cell, Telephone and Radio Repeaters will be unavailable



- Plan
 - Police VIPs, CERTs, Fire, EMS and Police will use Simplex (Line of sight) channels to local micro-island command post and its staff
 - VHF/UHF Amateur HAM operators will provide communications from these command post to the 5 Area Command Centers (ACC)
 - Amateur Radio Emergency Services (ARES) will provide communications from the 5 Area Commands to County Emergency Operations Center (EOC)
 - County (or its back-up) will provide communications to the State EOC who in turns communicates with the Federal resources
 - Status: County EOC in Courthouse is operational; backup capability operational in Sequim ACC; Joyce, Forks, and Sequim implementing communication plan; Port Angeles in early stages

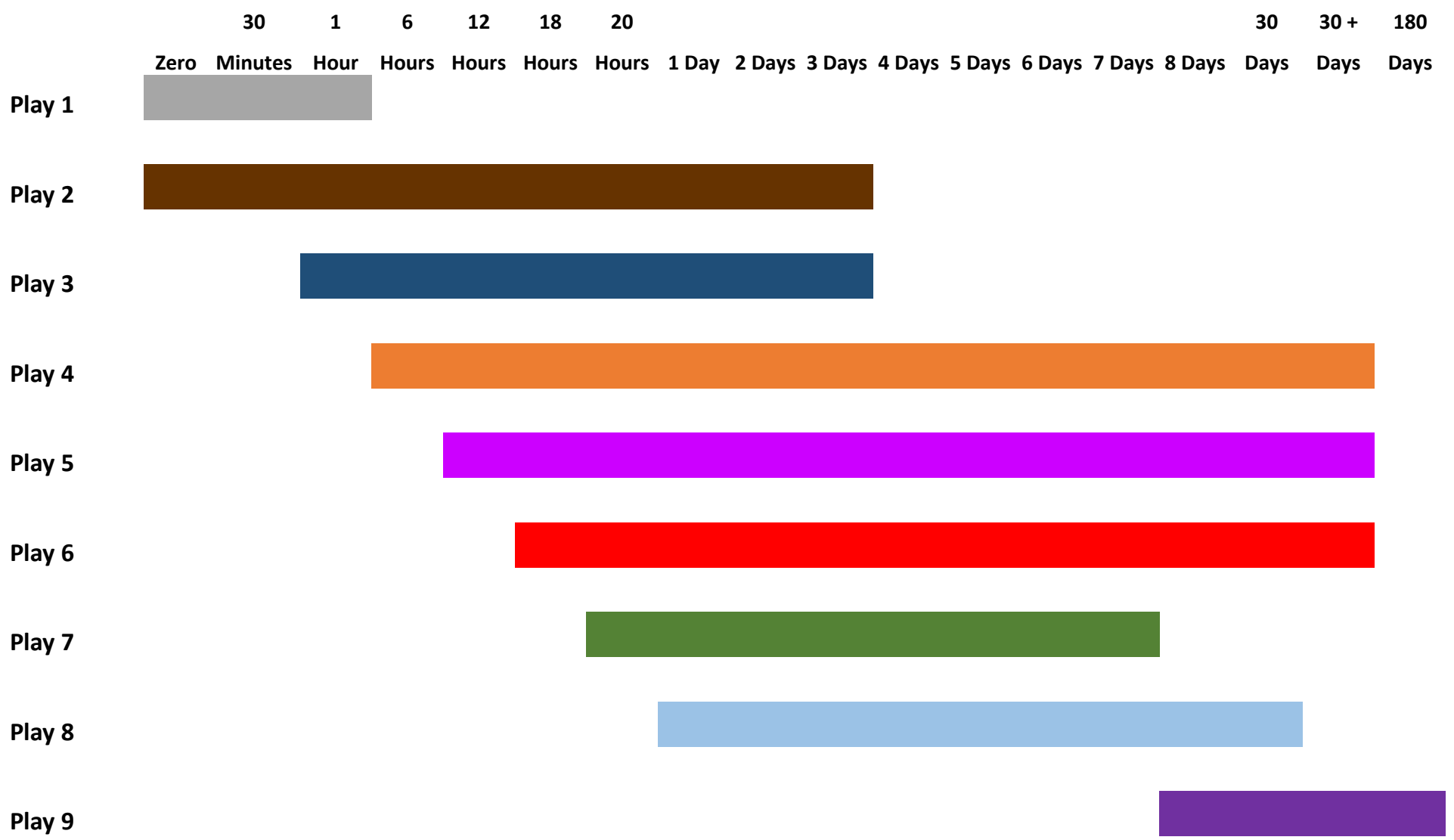
Oregon's Playbook for Disaster Response



Initial response in the event of ...

DISASTER EVENT!	PLAY 1	PLAY 2	PLAY 3	PLAY 4	PLAY 5	PLAY 6	PLAY 7	PLAY 8	PLAY 9
<ul style="list-style-type: none"> Initial Notification Emergency Declarations Activate OERS Succession / Authorities 	<ul style="list-style-type: none"> Life Safety Missions Search and Rescue Medical Care Scene Stabilization Emergency Communications 	<ul style="list-style-type: none"> Establish Contact with Affected Area Establish Lifeline Routes Assess Impacts / Damage 	<ul style="list-style-type: none"> Establish Shelters Transport Displaced People Vulnerable Populations Medical Care at Shelters Mass Feeding Animal Care 	<ul style="list-style-type: none"> Initiate Resource Requests Establish State Staging Areas Locate / Receive Supplies Points of Distribution 	<ul style="list-style-type: none"> Identify Critical Service Outages Prioritize Emergency Repairs Contingency Plans Emergency Contracting DMORT Operations 	<ul style="list-style-type: none"> Mobilize Heavy Equipment and Personnel Clear debris Repair Essential Systems JIC Operations 	<ul style="list-style-type: none"> Receive Federal Resources Expedite out-of-area Utility Repair Crews Volunteers and Donated Goods Track Federal Assets and Activation Levels 	<ul style="list-style-type: none"> Community Planning Needs Identify Recovery Priorities Begin Restoring Community Services Identify Human Services Needs Begin Restoring Critical Systems 	
	Notification, Activation and Authorities	Life Safety	Damage Assessment	Mass Care and Sheltering	Logistics and Resource Management	Planning and Prioritization	Emergency Repairs	Outside Assistance	Begin Recovery
	(0 – 30 min)	(0 – 72 hrs)	(1 – 72 hrs)	(6 hrs – 30+ days)	(12 hrs – 30+ days)	(18 hrs – 30+ days)	(20 hrs – 7 days)	(1 – 30+ days)	(8 – 180+ days)

Time Line of Plays



Our Strategy for First 72 Hours

- **Follow the Oregon State Model**
 - **Execute Play Book 1 – Prepare Pre-Event Declarations, Delegations, Succession Plan and Notifications**
 - City of Sequim & Forks underway or completed
 - City of Port Angeles and County not yet started
 - **Establish a Distributed Command & Control to address Disaster Chaos sooner**
 - Approved by Clallam County in a Resolution
 - **Execute Play Book 2 – Life Safety, Search & Rescue, Medical Care & Establish Communications**
 - Status:
 - Eastern Clallam, Joyce, & Forks well underway with plans; additional work needed
 - City of Port Angeles and County very limited work done
 - **Execute Play Book 3 – Establish Contact, Assess Damage, Open Life Lines,**
 - **Plan – Open Highways & Begin Recon**
 - Eastern Clallam: Open Highway 101, Old Olympic Highway, Washington Avenue, Sequim-Dungeness, Carlsborg, Kitchen-Dick
 - Joyce: Open 112 to Elwha to East Twin River; open Piedmont Road to Lakes
 - Forks: Open 101 and road to La Push
 - Clallam Bay connect local roads & link with Neah Bay or Forks
 - County and Port Angeles plan to be developed

Command and Control Plan

Clallam County EMD's proposed plan incorporates the following:

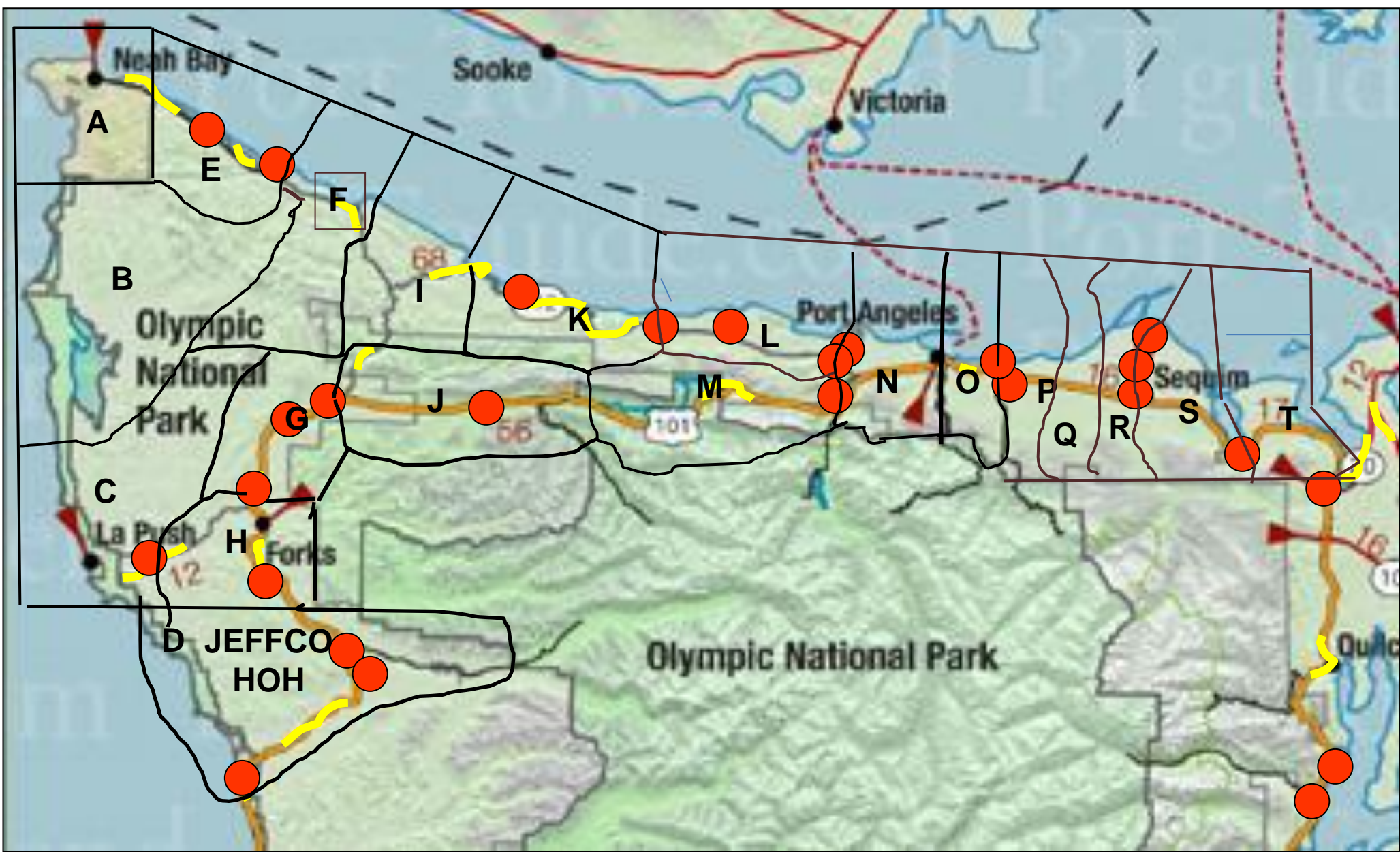
Adopts a “novel” approach tailored to micro-island management

- Decentralized emergency management vs traditional “county seat centric” plan
- Establish 5 decentralized area commands
Planning done at local community level.
Based on resources expected to be in area at the time of the event.
Promotes local ownership of the plan.
Optimizes the use of resources and knowledge of the area.

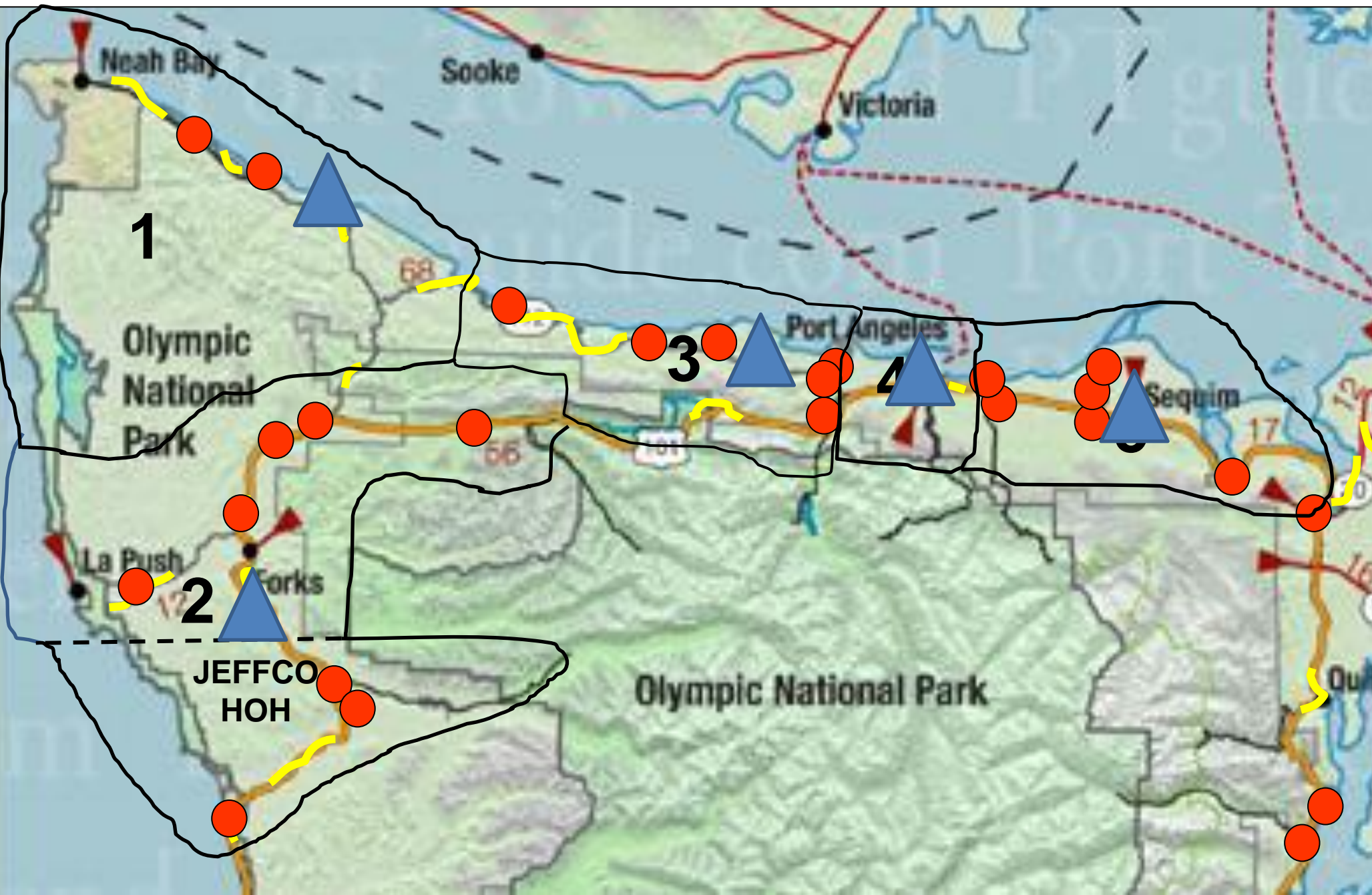
Uses detailed pre-event planning ground assessment (Ground Truths) for the Area Commands to plan by.

- Ground truths recognizes “natural breakpoints”: bridges, rivers, tsunami zones to define disaster islands that will exist and impede movement
- Uses the knowledge of the communities by local leaders to develop plans
- Uses ground truth documents to educate state and federal authorities to the expected damage and isolation of county communities.

Address the early “Disaster Chaos” that results from the destruction of the communications infrastructure by having locals make immediate decisions to save lives



Communities become micro-islands (Divisions) due to the loss of bridges, roads and tsunami zones.



Micro-islands (Divisions) are grouped into Command Areas based on the following hubs: Forks, Clallam Bay/Neah Bay, Joyce, Port Angeles, & Sequim

Area Commands for Clallam County

AREA COMMANDS for CLALLAM COUNTY, WA

COMMAND AREA 1 5 islands	COMMAND AREA 2 5 islands	COMMAND AREA 3 3 islands	COMMAND AREA 4 2 islands	COMMAND AREA 5 5 islands
DIV ALPHA - Neah Bay/Makah Nation DIV BRAVO - Ozette DIV ECHO - Shipwreck Point DIV FOXTROT - Clallam Bay DIV INDIA - Pysht	DIV CHARLIE - La Push / Quileutte Nation DIV DELTA - West Jeffco/Hoh Tribe DIV GOLF - Beaver DIV HOTEL - Forks DIV JULIET - Bear Creek	DIV KILO - Pillar Point DIV LIMA - Joyce DIV MIKE - Indian Valley	DIV NOVEMBER - Port Angeles West / Lower Elwha Klallam Tribe; SubDIV 01, SubDIV 02, SubDIV 03, SubDIV 04 DIV OSCAR - Port Angeles East; SubDIV 01, SubDIV 02, SubDIV 03, SubDIV 04,	DIV PAPA - Deerpark* DIV QUEBEC - R Corner DIV ROMEO - Carlsborg DIV SIERRA - Sequim DIV TANGO - Diamond Point, Gardiner, Blyn, Jamestown S'Klallam Tribe
FD#5, NEAH BAY TRIBAL POLICE, CCSO, CBP, USCG, NPS	FD#1, FD #6 FORKS PD, CCSO, CBP, USCG, NPS	FD#4 CCSO, CBP	FD#2, PAFD PAPD, CCSO, CBP, USCG, NPS	FD#3 SEQUIM PD, CCSO, CBP
** 1,770	** 4,777	** 3,649	** 23,368	** 36,558

Concept: "Areas of Command" are created after CSZ earthquake occurs dividing county into "micro-islands" of response because of highway/bridge damage, landslides & soil liquefaction. Concept based on FEMA HITRAC (Homeland Infrastructure Threat & Risk Analysis Center) Study completed 2011.

*Mutual Aid Area with FD#2
**population impacted



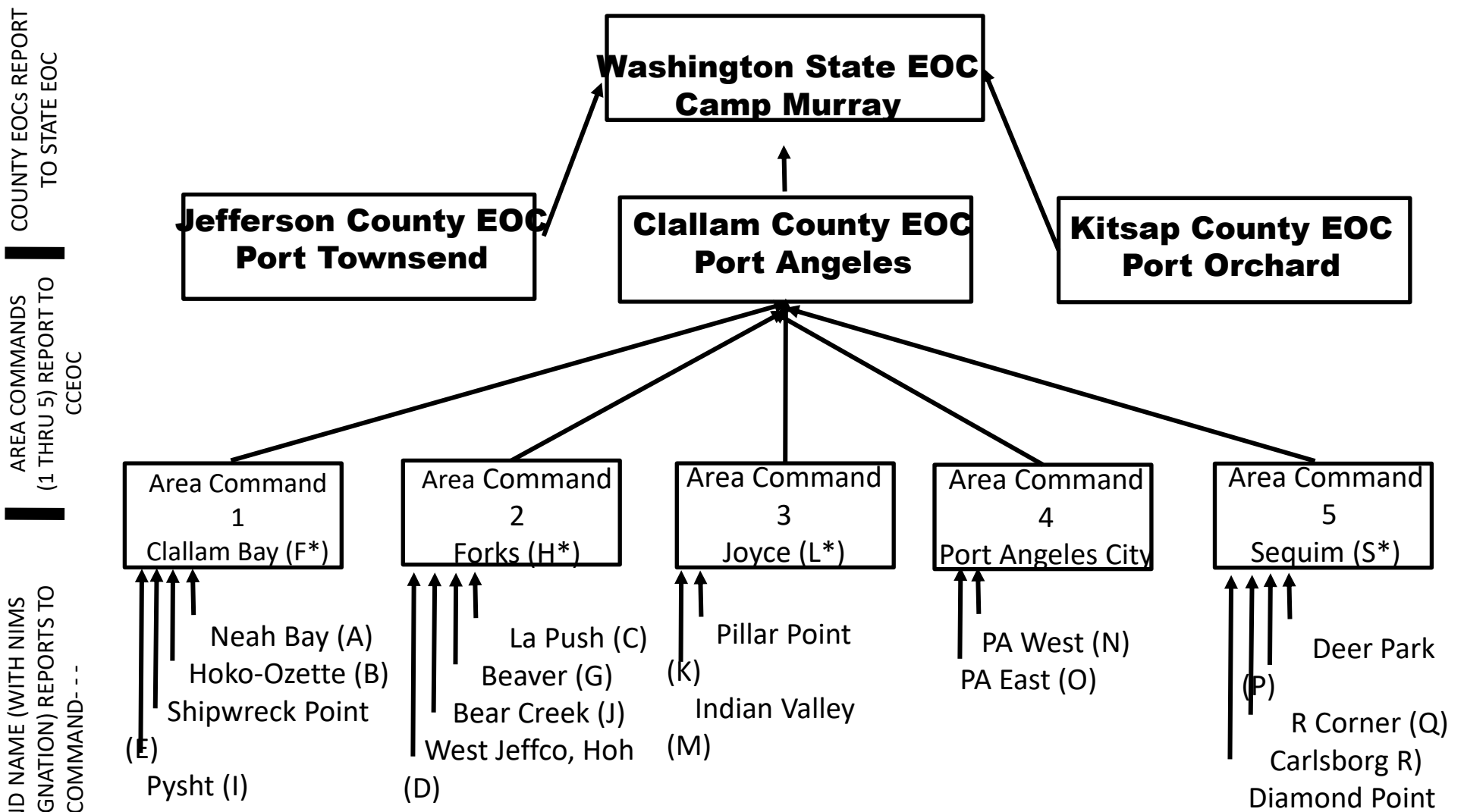
20 islands total

Updated 7/31/17 by PLinterman

Page 1

Emergency Management, Clallam County Sheriff's Office

CLALLAM COUNTY EMERGENCY MANAGEMENT AREA COMMAND CONCEPT



NOTE: NAMED AREA COMMANDS WITH AN ALPHA DESIGNATION AND ASTERISK (i.e., "Clallam Bay (F*)" = A STAND ALONE MICRO-ISLAND THAT IS ALSO DESIGNATED AS AN AREA COMMAND CENTER).

COUNTY EOCs REPORT TO STATE EOC
 AREA COMMANDS (1 THRU 5) REPORT TO CCEOC
 MICRO-ISLAND NAME (WITH NIMS DIVISION DESIGNATION) REPORTS TO AREA COMMAND

MISSION

MISSION – Develop and prepare to implement a survival strategy for residents and visitors trapped on the JOYCE micro-island using only materials on site for the first 10 days AND, be prepared to carry out strategy for an additional 20 days with minimal support outside support.

1. Escape the tsunami by moving to high ground above 40 feet in 40 minutes.
2. Shelter on high ground until tsunami danger is passed - 36 hours.
3. Except for those in the Lyre River, Crescent Beach, Salt Creek, Place Road tsunami zones, shelter in place in remaining safe shelters until help arrives.
4. Conserve fuel – drive only in an emergency. Fuel will be restricted to emergency vehicles and construction equipment.
5. CCFD#4 moves at risk residents and travelers to safe shelter in Joyce.
6. ACC#3 does reconnaissance of Pillar Point and Indian Valley micro-islands.
7. ACC#3 prepares to shelter survivors from Pillar Point and Indian Valley.

EXECUTION – Clallam County Emergency Management (CCEM), CCFD#4, Coast Guard and interested residents meet to plan survival strategy for Joyce residents and travelers.

1. CCFD#4 conducts rescue, recovery and response operations as directed in its Delegation of Authority from the Clallam County Commissioners.
2. CCFD#4 implements the Joyce micro-island plan.
3. Area Command 3 (CCFD#4 Incident Commander) releases the Shelter Cache, Joyce Emergency Planning and Preparedness (JEPP) group sets up shelter per shelter plan.

Camping In Your House

Assess your shelter



If your house looks like this you might want to salvage materials and build a shelter ... or use a camper to shelter in place.



If your house looks like this you might want to use it to shelter in place.

Repair your shelter

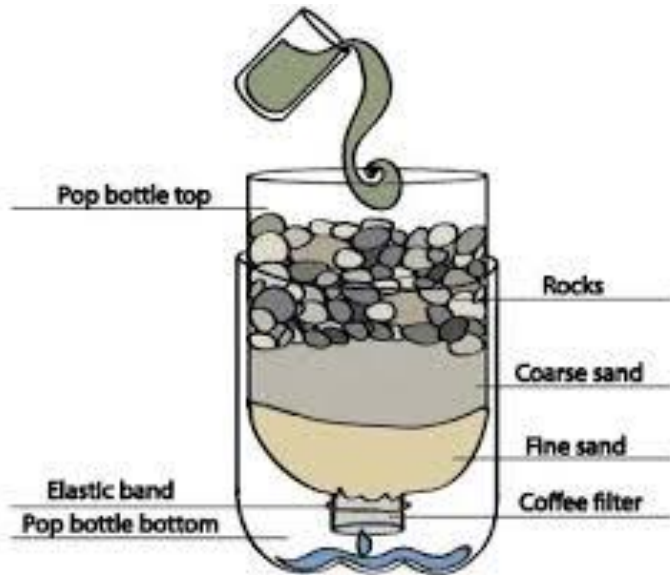


More affordable tents



Camping In Your House

Water Purification



Food Supplies



Clean up your shelter

